

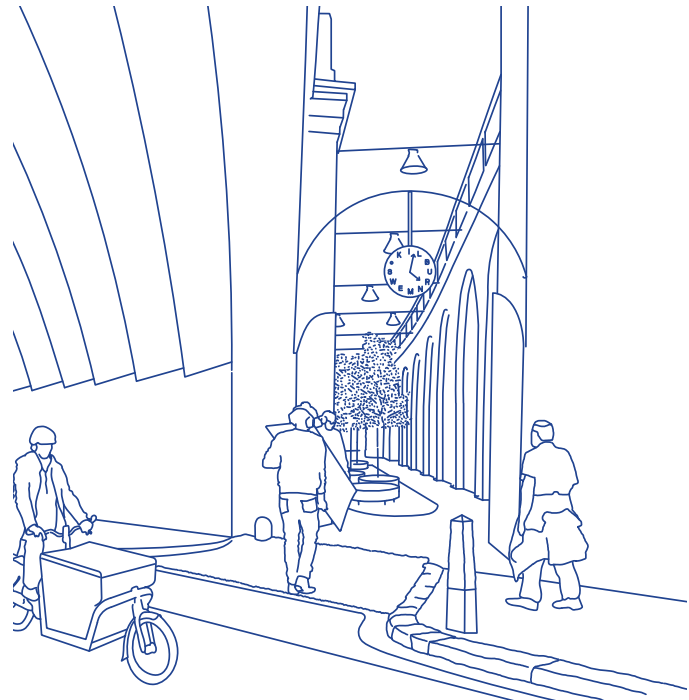


Update on the Kilburn Arches project

Transport for London (TfL) is investing in the arches surrounding Kilburn tube station to provide improved public spaces and facilities for local people and businesses.

The project seeks to create a place shaped by local communities that is welcoming, open and accessible for all, by bringing the arches up to modern standards and improving the surrounding public spaces to create a welcoming gateway to the High Road.

Working with DK-CM, we have begun to develop plans and designs for the historic and characterful arches, bridges and surrounding yards between Kilburn High Road and Loveridge Road.



In this second newsletter, find out more about the design development, highlights of what we've learnt from organisations and communities in Kilburn so far, and how the Kilburn Arches project will deliver on these insights. We'd love your ideas and feedback – get in touch at:

<https://haveyoursay.tfl.gov.uk/kilburn-arches>

'The arches tend to have always been used for general making and repairing'

'There is a lack of community space'

'Kilburn and the High Road need a welcoming entrance'

'The green space is piece meal and there is no connection between the green spaces we do have'

'There is not one thing alone that makes Kilburn unique, it is a combination of things'

'Kilburn needs places that young people can take ownership of'

'Kilburn Arches is a place of production and creativity'

What we've learnt so far for the future of Kilburn Arches

Since summer 2021, we have spoken with community groups, organisations, and associations across Kilburn to learn more about Kilburn Arches as they are today, and to understand the local ambitions for the future of the arches and the wider High Road.

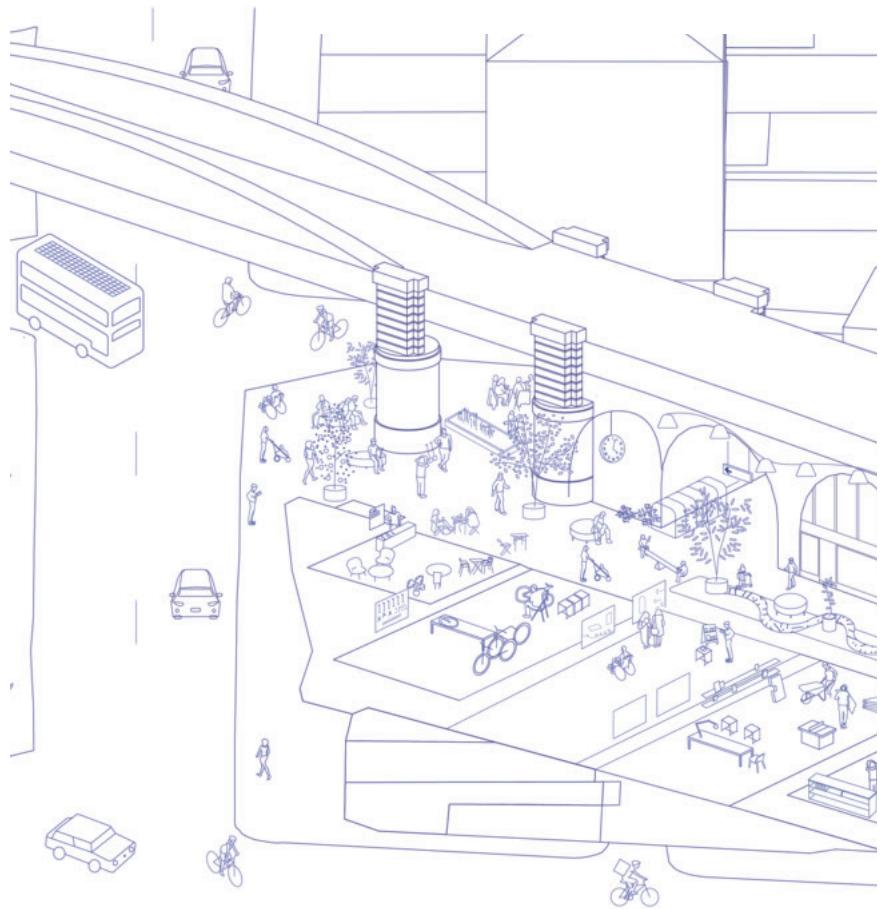
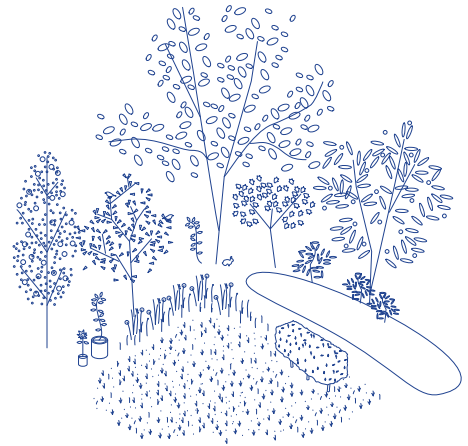
Here are some of the insights we've learnt, and how they've been captured in the designs being developed for the Kilburn Arches. Think we've missed something? Let us know at:

<https://haveyoursay.tfl.gov.uk/kilburn-arches>

What do you think?

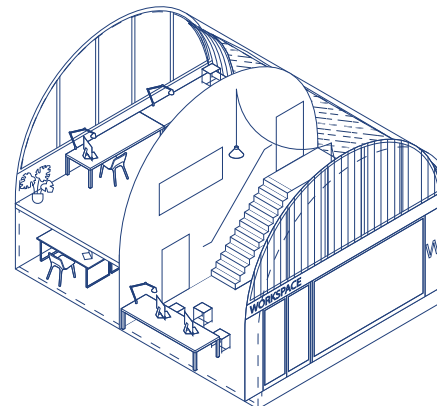
What uses and activities would you like to see?

What the project will deliver...



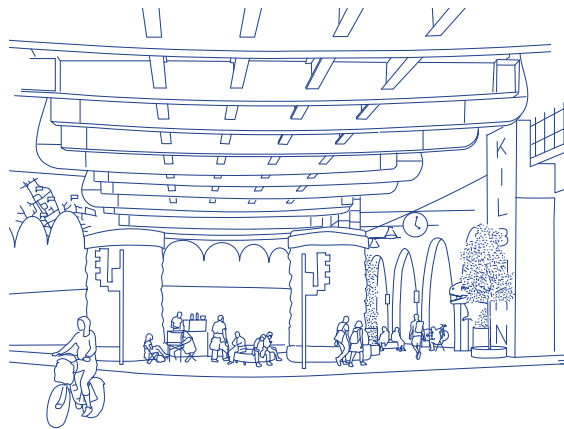
Lively, diverse activities in the arches and yards

The existing creative and gritty character of the arches will be celebrated with different new uses to make it an exciting place for Kilburn



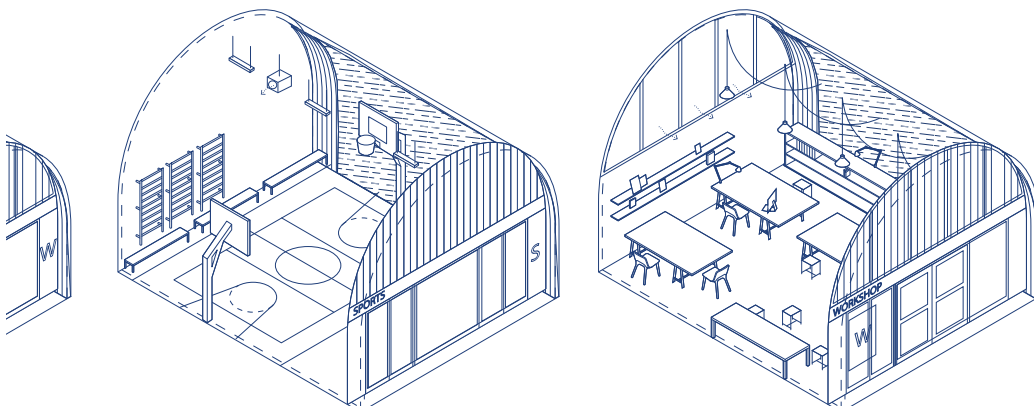
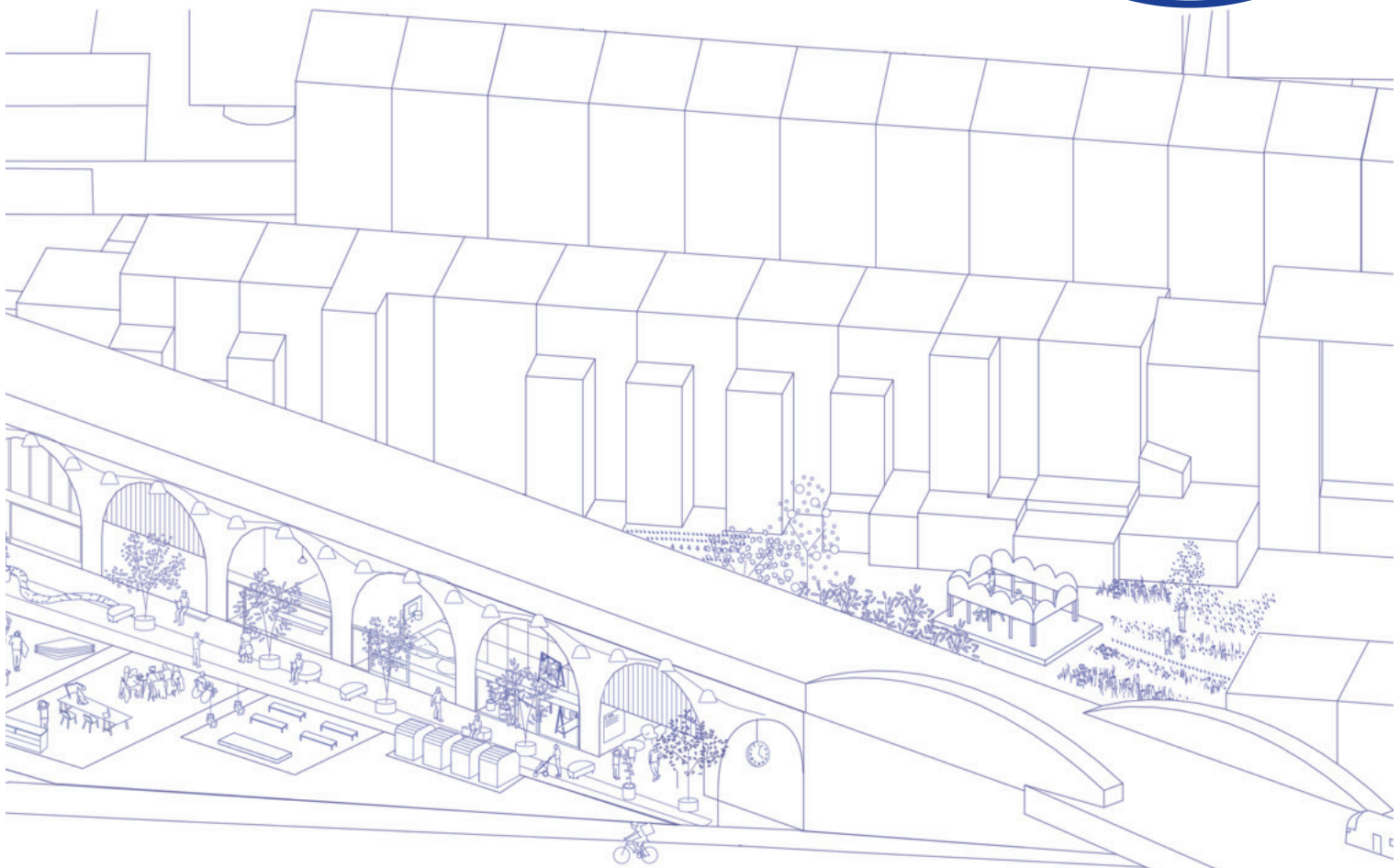
Increasing planting, ecology and biodiversity

New planting, street furniture and landscaping will help to combat air/noise pollution, anti-social behaviour and rubbish



New public spaces for the High Road

The Mews will be landscaped and opened up to the High Road to make a new pedestrian route and spaces to rest and socialise off the busy High Road



Future-proofing the arches for the 21st century

The arches are in poor condition and in need of investment, to make a better entrance to the High Road and improve their sustainability

What would you like to see?

Share your thoughts and feedback to help us make sure the future of Kilburn Arches is lively and loved – what do you think?

What are your priorities for the future of Kilburn Arches? Is there anything you feel we have missed?

Who do you think we should speak to? Who are local voices we haven't connected with yet?

What would have the biggest positive impact for Kilburn, the High Road and the community?

Anything else to add? What would you add to the project if you could?

Upcoming events in Kilburn

There's lots on this summer!

Kingsgate Workshops Open Studios

11th – 12th June
Find out more about the Artists and Makers and take part in workshops! Full programme available on their website

Zodwa Nyoni's gripping drama directed by Nancy Medina and hosted by this loved local theatre that champions unheard voices
July – August

Kiln – The Darkest Part of the Night

Kilburn Arches Exhibition

Summer
See the designs for the Kilburn Arches project and share your thoughts and feedback before the planning application is submitted later in the summer

In the House of my Love, Brent's 2nd Biennial, brings together artists and community groups to explore the meaning of homemaking
July – September

Brent Biennial 2022 – Metroland Cultures

Some dates for our diaries...

Contact details

Our project website will be regularly updated and includes a series of surveys so you can help contribute to the project:

<https://haveyoursay.tfl.gov.uk/kilburn-arches>

Or email: kilburnarches@tfl.gov.uk

Alternatively, you can post any physical responses to our community letter box at:

2C Maygrove Road
(Cod's Plaice),
Kilburn,
London,
NW6 2EB

Have your say