

LONDON BOROUGH OF  
**HARROW**

# Parks and Open Space Strategy

2025-2030

# Contents

Foreword .....	3
Introduction .....	4
Why a Strategy is Needed .....	4
Vision .....	6
Harrow's Parks and Open Spaces .....	7
Themes .....	9
Preservation and Enhancement.....	9
Quality and Accessibility .....	10
Nature and Sustainability .....	11
Health and Wellbeing .....	12
Community.....	13
Delivering the Strategy .....	15
Partners and Stakeholders .....	15
Funding the Strategy.....	16
Monitoring and Evaluation.....	16
Action Plan .....	18
Appendix 1: Definitions of Categories of Green Spaces in Harrow .....	29
Appendix 2 - List of Sites with Categorisation .....	31
Appendix 3 – Map of Harrow Parks and Open Spaces .....	36
Appendix 4 – Overview of Features and Facilities per Site .....	37

# Foreword

High-quality green spaces play a vital role in everyday life – offering places to play, relax, exercise, connect with nature, and spend time with friends and family. Parks and open spaces sit at the heart of our communities, supporting wellbeing, encouraging activity, and providing a much-needed escape in an ever-busier world.

That's why we've developed an ambitious Parks and Open Spaces Strategy – a plan that puts people and quality first. To help bring this to life, we're committing over £6 million investment to enhance our parks over the next three years.

This funding will support a wide range of improvements – from better footpaths, entrances, and signage to refreshed playgrounds, upgraded buildings, and safer, more inclusive spaces for all ages. Our focus on play areas will see old equipment replaced, new features introduced, and safety surfacing installed to meet the highest standards.

We're also working to increase the number of Green Flag parks in the borough by a third and are determined to achieve our flagship goal of nine Green Flag accreditations – the highest number Harrow has ever achieved.

This strategy isn't just a plan for now – it's a foundation for the future. It will help us attract further public and private investment and ensure our parks and open spaces continue to thrive as welcoming, safe and valued places for everyone to enjoy.



**Councillor Paul Osborn**  
Leader of the Council



**Councillor Janet Mote**  
Portfolio Holder  
Community and Culture

# Introduction

Parks and open spaces are fundamental to the health, well-being, and quality of life of any urban community.

In the London Borough of Harrow, these spaces serve as crucial green havens amidst a rapidly urbanising landscape, offering residents and visitors a place for recreation, relaxation, and connection with nature.

From well-maintained local parks to tranquil nature reserves and green corridors, Harrow is home to a diverse range of open spaces that support both environmental sustainability and the social fabric of the community.

The Parks and Open Space Strategy for Harrow is a comprehensive plan designed to protect, enhance, and expand these green spaces to meet the evolving needs of a growing population. As Harrow continues to develop, the demand for accessible, high-quality outdoor spaces is more important than ever.

In November 2022, the Council established a new vision: *Restoring Pride in Harrow*, along with three key priorities:

- A council that puts residents first
- A borough that is clean and safe
- A place where those in need are supported.

This strategy outlines a clear vision and action plan for the next five years, ensuring that the borough's parks and open spaces are aligned with these three corporate priorities.

## Why a Strategy is Needed

The strategy recognises that Harrow's open spaces face several significant challenges, including the pressures of urban development, increased footfall, and the impacts of climate change.

Rising temperatures, more frequent extreme weather events, and the loss of biodiversity all threaten the integrity of these green spaces.

Additionally, as the borough's population grows, so too does the need for more



inclusive, accessible, and diverse open spaces that cater to a wide range of recreational, social, and environmental needs.

At the same time, Harrow's parks and open spaces offer immense potential to contribute to the borough's climate change goals. Green spaces help mitigate the effects of climate change by absorbing carbon, managing flood risks, and supporting nature. They also promote physical and mental well-being by providing safe, welcoming environments for exercise, relaxation, and social interaction. By investing in and improving these spaces, Harrow can create a healthier, more resilient community.

The Park and Open Space Strategy outlines a long-term vision for Harrow's green infrastructure, organised around the following five key themes.

<p><b>Preservation and Enhancement</b></p> <p><i>Protect existing parks and open spaces from overdevelopment, while enhancing their ecological, aesthetic, and recreational value.</i></p>
<p><b>Quality and Accessibility</b></p> <p><i>Ensure that all residents have access to high-quality green spaces, regardless of their location, age, ability, or socio-economic background.</i></p>
<p><b>Nature and Sustainability</b></p> <p><i>Promote sustainable land management practices that enhance biodiversity, improve air, and water quality, and contribute to the borough's climate adaptation efforts.</i></p>
<p><b>Health and Wellbeing</b></p> <p><i>Encourage active lifestyles and mental well-being by providing safe, clean, and welcoming environments for physical activity, relaxation, and community engagement.</i></p>
<p><b>Communities</b></p> <p><i>Engage local residents, community groups, businesses, and other stakeholders in the stewardship, design, and management of Harrow's open spaces.</i></p>

Through this strategy, Harrow aims to balance the need for development with the importance of preserving and enhancing green spaces. By adopting forward-thinking approaches, such as nature-based solutions for flood management and sustainable urban drainage systems (SUDS), the borough can create multifunctional spaces that not only serve recreational purposes but also function as natural defences against climate change impacts.

In addition, the strategy recognises the vital role that parks, and open spaces play in fostering social cohesion and community resilience. Harrow's diverse population can benefit from green spaces that reflect the cultural richness of the community, offering places for social gathering, festivals, and intercultural exchange. Well-designed, inclusive spaces can also promote safety, reduce anti-social behaviour, and enhance the overall quality of life in the borough.

The successful implementation of the Parks and Open Space Strategy relies on strong partnerships with local communities, schools, businesses, and environmental organisations. By fostering collaboration, Harrow aims to empower residents to take an active role in shaping and caring for their local parks and open spaces. This strategy will also encourage greater use of volunteer programs, community-led events, and educational initiatives that promote environmental stewardship and foster a deeper connection between people and their local green spaces.



## Vision

Our vision is to create **a network of high-quality, accessible, and sustainable parks and open spaces through Harrow's Green Grid that are central to the health, well-being, and identity of the London Borough of Harrow.** These green spaces will be safe, welcoming, and inclusive, providing opportunities for all residents, regardless of age, ability, or background, to connect with nature, engage in recreation, and participate in their community.

We envision a future where Harrow's parks and open spaces are not only beautiful and vibrant but also serve as critical resources for long-term environmental sustainability and climate resilience. By enhancing biodiversity, supporting wildlife habitats, and promoting sustainable land management practices, these spaces will play a key role in addressing the challenges of climate change and urban development.

Harrow's green spaces will reflect the diversity and cultural richness of the community, offering spaces for celebration, social cohesion, and intercultural exchange. Through collaborative partnerships and community engagement, we will foster a sense of ownership and pride, empowering residents to actively contribute to the stewardship of these vital resources.

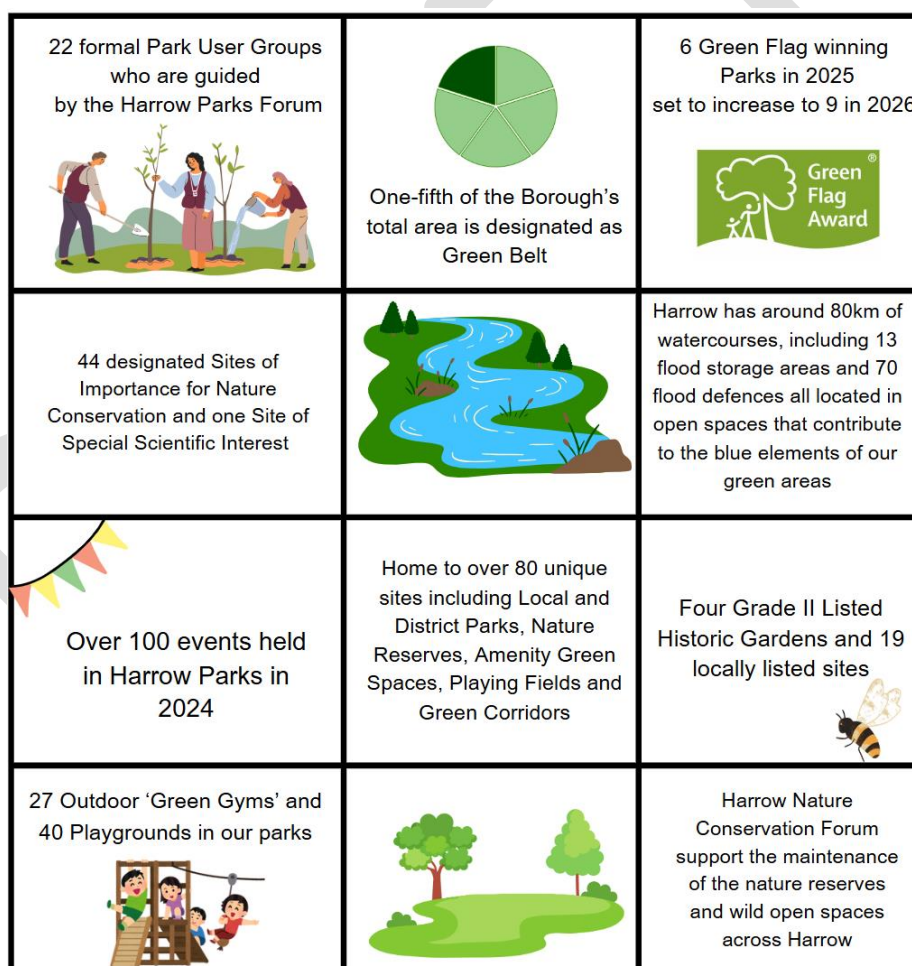


# Harrow's Parks and Open Spaces

Harrow is home to over 1,100 hectares of green space, encompassing local parks, nature reserves, playing fields, playgrounds, and public gardens. These spaces contribute significantly to the borough's identity, health, and overall well-being.

Whilst we recognise that allotments, churchyards, verges, and roundabouts also hold natural capital, they have been excluded from this strategy.

The infographic below highlights just a few of the many features of Harrow's parks, providing a snapshot of the current conditions that will serve as the baseline for future developments.



The portfolio contains a significant amount of unique heritage, archaeological and historical environments, including four Grade II Listed Historic Gardens and nineteen locally listed sites. These spaces help maintain the character and heritage of Harrow.

According to the 2024 Resident Survey, Harrow's parks and open spaces are highly valued, with 83% of residents expressing satisfaction with these amenities. This indicates that these public spaces are well-maintained and well-regarded within the community. While this is a positive foundation, we acknowledge there is still potential for further improvement.

Our parks boast a variety of unique facilities across different sites, each offering distinct opportunities for residents to enjoy the spaces in their own way. These include playgrounds, green gyms, wildflower meadows, and water features, among others. A comprehensive list of the sites and their respective features can be found in Appendix 4. The action plan highlights the need to enhance this list by making it more visually engaging and interactive on our website in the future.



# Themes

The Park and Open Space Strategy is built around five key themes that will guide the development and management of Harrow's green spaces. These themes—Preservation and Enhancement, Quality and Accessibility, Nature and Sustainability, Health and Wellbeing, and Communities.

The next chapter shows a more detailed action plan outlining the steps required to get us to where we want to be.

## Preservation and Enhancement

The London Borough of Harrow is committed to maintaining, upgrading, and protecting its valuable green spaces. We are making record capital investment into parks infrastructure and playgrounds, which will enhance the accessibility and environmental value of our parks, ensuring they meet the needs of a growing population.

As part of this investment, we are increasing the specialised staff within the Environmental Operations Team, including additional litter operatives and solutions to improve cleanliness across our parks. The Community Engagement team has also expanded over the past year, providing additional support to our volunteers, ensuring they have the resources and guidance needed to contribute effectively.

This section outlines our objectives and strategies for improving park facilities, securing funding, and collaborating with internal and external partners. Through this combined effort, we will meet the needs of the community and ensure the long-term sustainability of these spaces.

### **What We Aim to Achieve:**

- Upgrade existing parks to ensure they meet the needs of future generations.
- Maintain a fair balance between development and the protection of green spaces within the borough and the cultural heritage assets within them.

### **How We Aim to Achieve This:**

- Develop a structured investment strategy, using council capital funds to continuously upgrade and improve park facilities.
- Explore external funding opportunities to support new projects and further investment in parks including conserving their cultural heritage.
- Work closely with Planning Policy and Development Management to ensure residents in new developments have access to green spaces and to enhance those spaces and explore any funding opportunities to enhance the quality of parks in close proximity to new development where appropriate.

# Quality and Accessibility

Ensuring the quality and accessibility of Harrow's parks is central to our strategy. We are committed to creating spaces that are welcoming, well-maintained, clean and accessible to all, positively contributing to the health and well-being of our local communities.

By offering a diverse range of facilities and addressing any disparities, we aim to meet the needs of all park users. Our approach is community-focused, with strong collaboration between stakeholders, including Park User Groups and local volunteers, to ensure our parks remain places of enjoyment, relaxation, and engagement for everyone.

Six of our parks have achieved the prestigious Green Flag status, recognising their high-quality management and upkeep. This has been made possible through significant investment in park improvements and collaboration with Park User Groups. One of the Council's Flagship Actions is to maintain these esteemed awards and increase the number of Green Flags by 50% by 2027. Chandos Recreation Ground, West Harrow Recreation Ground, and Riverside Park are currently being prepared to join the list of Green Flag winners.

By using the internationally recognised standards of the Green Flag award, we strive to provide these standards throughout the rest of the parks across the borough.

## What We Aim to Achieve

- Ensure our parks are welcoming, accessible, well-maintained, and contribute positively to the safety and well-being of local communities.
- Promote a balanced and diverse range of facilities across our parks, addressing any disparities.
- Strengthen our community-focused approach to managing open spaces by collaborating closely with external stakeholders, such as Park User Groups and local volunteer organisations.

## How We Aim to Achieve This

- Undertake a comprehensive audit of our open space portfolio to identify sites in need of investment, enhancement, or conservation.
- Deliver the Council's Flagship Action to maintain the six Green Flag awards for Kenton Recreation Ground, Pinner Memorial Park, Headstone Manor Park, Canons Park, Harrow Recreation Ground, and Roxeth Recreation Ground, while increasing the total to nine by adding Chandos Recreation Ground, Riverside Park, and West Harrow Recreation Ground.
- Introduce Management Plans for all Parks and Open Spaces, prioritising Local and District Parks, to ensure structured and effective management.

- Improve accessibility, ensuring that information is up to date on our website and available ahead of visits.
- Continue to invest on Harrow's Green Grid, helping to improve accessibility and connection to parks and open spaces.
- Use the internationally recognised Green Flag standards to guide improvements and assessments.
- Where appropriate, take a data-driven approach in our interventions, ensuring that decisions are based on robust analysis and evidence.
- Compile an inventory of all parks and open spaces assets.

## Nature and Sustainability

Protecting and enhancing Harrow's natural habitats and wildlife is essential for preserving the borough's green spaces for future generations. Our strategy focuses on developing thriving, ecologically diverse parks and open spaces in Harrow that not only mitigate the effects of climate change but also ensure that the borough is more resilient and adaptable to future challenges. By promoting eco-friendly management practices and providing greater opportunities for residents to connect with the natural world, we aim to foster a greater appreciation of the intrinsic value of our parks and open spaces, encouraging environmental stewardship and the sustainable use of resources for the benefit of both people and wildlife.

### What We Aim to Achieve:

- Protect and improve Harrow's natural habitats and wildlife ensuring that they are contributing to the London Local Nature Recovery Strategy.
- Ensure that Parks and Open Spaces are managed and developed in a way that increases natural capital and the resilience of the borough to climate risks (e.g., extreme weather events)
- Develop low carbon and sustainable approaches to the management of our parks and open spaces.
- Raise public awareness of the intrinsic value of these green spaces.

### How We Aim to Achieve This:

- Implement conservation programmes within our parks and green spaces.
- Introduce eco-friendly practices and upgrade facilities to combat climate change and ensure long-term sustainability.
- Ensure our green spaces support and facilitate the aims of Harrow's Climate Change and Nature Recovery Strategy.

- Promote the importance of our parks and open spaces and foster environmental stewardship through targeted grant funded projects, campaigns, signage, and informative materials.
- Explore the use of biodiversity net gain funding (from offsite mitigation contributions) to improve our parks and open spaces where appropriate.

## Health and Wellbeing

Promoting the health and wellbeing of Harrow's residents is a key priority, with our parks playing a vital role in supporting both physical and mental health. By increasing access to green spaces and encouraging active use, we aim to foster healthier lifestyles for people of all ages and backgrounds. Our approach focuses on providing inclusive opportunities for physical activity, mental health support, and social connection, particularly for vulnerable and underserved groups within the borough. Through community-driven events and partnerships, we aim to highlight the health benefits of our open spaces, making them welcoming and accessible for everyone.

### What We Aim to Achieve

- Promote the physical and mental health benefits of Harrow's open spaces by increasing access and encouraging active use.
- Highlight the range of facilities within Harrow's open spaces that support healthy, active lifestyles for local residents.
- Use our open spaces to host a variety of events and activities that enhance the health and wellbeing of Harrow's residents and visitors of all ages, fostering community engagement and inclusivity.
- Support those in need by ensuring our open spaces provide accessible opportunities for physical activity, mental health support, and social connection for vulnerable and underserved groups in the borough.

### How We Aim to Achieve This

- Raise awareness of the health benefits offered by Harrow's parks through targeted campaigns, including online promotion and community outreach.
- Ensure all parks in Harrow provide accessible, well-maintained facilities for physical activity, such as exercise equipment, sports courts, and walking routes.
- Work closely with Harrow's Public Health team to ensure that parks support their work.
- Collaborate with health and wellness organisations to run fitness classes, wellbeing events, and health-related activities in our parks, ensuring these programmes are inclusive and available to those in need.

- Facilitate seasonal and themed events in Harrow's open spaces that encourage participation in outdoor activities, with a focus on reaching vulnerable and isolated groups.
- Engage with local schools, community groups, and other stakeholders to develop inclusive programmes that cater to a variety of ages and interests, with particular emphasis on supporting disadvantaged or at-risk individuals.
- Ensure that events and activities promote mental health awareness, providing spaces for relaxation, connection, and outdoor mindfulness, especially for those experiencing mental health challenges.

## Community

Engaging the local community in the stewardship, design, and management of Harrow's parks and open spaces is essential for creating spaces that meet the needs and aspirations of residents.

We are committed to providing excellent customer service, empowering volunteers, and encouraging active involvement in the care and development of our parks. Over the past year, the Community Engagement team has grown, offering enhanced support to our volunteers and ensuring they have the necessary resources and guidance to make a meaningful contribution.

We want to build on and strengthen our partnerships with the Harrow Parks Forum and the Harrow Nature Conservation Forum (HNCF) as well as River Catchment Hosts Crane Valley Partnership (CVP) and Brent Catchment Partnership led by Thames21.

Through ongoing consultations, celebrating volunteer achievements, and supporting community-driven projects, we will strengthen the connection between Harrow's green spaces and the people who use them.

### **What We Aim to Achieve:**

- Provide excellent customer service to park users and stakeholders, ensuring their needs are met efficiently.
- Develop projects that meet the specific needs of local communities.
- Foster pride in Harrow's parks by encouraging community participation in their care and development.
- Involve the wider community in decision-making through consultations to ensure their views influence park planning and improvements.
- Recognise and celebrate the achievements of volunteers and groups.

### **How We Aim to Achieve This:**

- Where a park does not have a constituted volunteer group, we will support the development of new Park User Groups
- Support Harrow's Park User Groups, Friends Groups, River Catchment hosts and Conservation Groups to grow their membership base.
- Support the Park User Forum in its work to ensure effective structures and governance arrangements are in place.
- Offer training and resources to help volunteers and partners secure funding and manage projects.
- Support Park User Groups to recruit new volunteers and encourage deeper engagement from existing ones.
- Build stronger partnerships with local organisations, charities, and businesses to access more resources.
- Ensure the community's involvement in park decisions by regularly consulting with residents.



# Delivering the Strategy

The successful delivery of the strategy's objectives will rely on several key factors:

- The active support and contribution of our partners and stakeholders in delivering high-quality work.
- Securing consistent and sufficient funding throughout the strategy's lifespan.
- Establishing a clear and effective monitoring framework, with defined milestones and achievements to assess progress.
- Ensuring the strategy is widely communicated and promoted in a range of formats to foster ongoing stakeholder engagement.

## Partners and Stakeholders

We recognise the immense value of community involvement in our parks and are committed to building on this support, ensuring we can effectively assist their efforts and strengthen these relationships even further.

In Harrow, Park User Groups offer local residents the opportunity to shape the future of their parks by ensuring their voices are heard in planning and decision-making. These groups help foster a sense of community ownership, encouraging volunteer involvement and working closely with the Council and other partners to improve park facilities. By advocating for upgrades, securing funding, and supporting sustainable management, Park User Groups play a vital role in enhancing Harrow's green spaces for everyone to enjoy.

Community Engagement officers have played a key role in supporting the establishment of these groups, helping them become formally constituted and empowering them to drive change within their communities. We are proud to have twenty-two active groups across Harrow and will continue to rely on their expertise and community spirit to help us achieve our goals over the lifetime of the strategy.

Park User Groups in Harrow are supported by an umbrella organisation, the 'Park User Forum,' which gives them a unified voice and representation within Council structures. In turn, the Council actively provides these forums with both financial and practical support for their community-based projects and initiatives.

Other community groups include the Harrow Nature Conservation Forum (HNCF), a sub-committee of the Harrow Heritage Trust, is a group of volunteers who support the conservation work in the majority of the nature reserves and wild open spaces in the

borough along with support from The Conservation Volunteers (TCV) Their expertise and passion for conservation work is invaluable.

We have collaborated with a wide range of stakeholders in the development and implementation of this strategy, which can be grouped into two main categories:

**Statutory Bodies** – These organisations provide essential support and legal guidance in the development of policies. This includes government departments and public bodies such as the Department for Environment, Food and Rural Affairs (Defra), the Environment Agency and Natural England.

**Charities and Community Organisations**– These groups offer valuable knowledge, insights, and expertise that help shape policies aimed at benefiting the community. We aim to work closely with the Harrow Association of Disabled People (HAD) and Young Harrow Foundation (YAH) in particular, whilst recognising a host of other voluntary and community sector groups who are actively involved in their park communities.

## Funding the Strategy

It is acknowledged that achieving our goals will require funding.

As highlighted under the 'Preservation and Enhancement' theme, we are committed to developing a structured investment strategy, using council capital funds and grant funding that becomes available to continually upgrade and improve park facilities.

Development can provide opportunities to use Section 106 or CIL funding to further support these improvements. By setting clear goals and proactively identifying projects, we can (where appropriate) seek contributions from developers, as well as make a greater impact when funding becomes available, ensuring that parks are fit for purpose for local residents.

Having a well-defined strategy will also help attract external funding, as it will give funders confidence that their investment and assets are being properly managed and are part of a wider, cohesive plan.

## Monitoring and Evaluation

The successful implementation of the Parks and Open Space Strategy depends on ongoing monitoring and evaluation to ensure that its objectives are being achieved and that adjustments are made as necessary. To maintain cross-directorate collaboration, a steering group was formed in 2024 to oversee the strategy's progress, approve key deliverables, and provide strategic direction.

This group, which includes key officers, will meet bi-monthly to assess the status of initiatives, track progress, and address any challenges or opportunities that may arise.

The steering group is chaired by a director of service in the Culture, Environment and Economy Directorate. The Policy Officer plays a central role in project management, ensuring coordination and input from relevant services. This collaboration is essential for meeting the strategy's goals and ensuring it aligns with broader organisational priorities.

Progress will be assessed using a Traffic Light System:

- **Green:** The outcome within the action point has been fully achieved.
- **Amber:** Significant progress has been made towards achieving the outcome, with 50% or more of the work completed.
- **Red:** Work has yet to start or has made insufficient progress, with less than 50% of the work completed.

Each action point will include details on the progress made to date, the next milestones, and target dates for their completion. The Place Making Strategic Board will review progress on a quarterly basis. The Portfolio Holder will be updated at fortnightly briefing meetings. This approach will facilitate timely decision-making and ensure the strategy stays on track with its goals and objectives.

An annual evaluation of the implementation of the Strategy will be undertaken. This will include lessons learnt and remedial action that may need to be taken to address underperformance. The evaluation will be presented to the Place Making Strategic Board and the Portfolio Holder.

By combining regular steering group meetings, proactive project management, and quarterly reviews at the Place Making Strategic Board, along with the annual review process, the strategy will remain adaptable, responsive to emerging needs, and focused on long-term success in enhancing parks and open spaces.

# Action Plan

The action plan below outlines the actions that are needed to achieve the goals set out.

The timeframes set out are Short (1-2 years) and Medium (3-5 years)

Preservation and Enhancement			
Action	Responsible Team	Timeframe	Milestones/Outcomes
Implement the business case for Council capital investment to upgrade parks infrastructure.	Parks Infrastructure/Parks Policy	Ongoing, 3-year programme starting in 2025 (3-5 years)	Number of playgrounds improved. Hard and soft landscape improved. Rolling programme across twenty parks and open spaces.
Seek external funding to supplement park projects and improvements.	Parks Policy	Medium (3-5 years)	Identification and securing of external funding.
Work with development management in planning to ensure net gain for green spaces from developments where appropriate	Parks Policy/Planning	Ongoing	Planning decisions made based on environmental impact.
Support sustainable development and urban regeneration that improve the quality of existing open spaces, providing a variety of benefits and uses while ensuring their long-term maintenance.	Parks Policy/Planning	Short (1-2 years)	Successful integration of sustainable development practices in urban regeneration.

Make use of Section 106 funding and development opportunities to enhance our green spaces where appropriate.	Parks Policy/Planning	Ongoing	Successful securing and use of Section 106 funding for park improvements.
Identify and protect heritage buildings and structures within parks that contribute to the unique character of the borough.	Planning/Parks Policy	Medium (3-5 years)	Heritage buildings identified and protected.
Ensure event organisers use our parks and open spaces in accordance with our policies and procedures for events.	Events Team/Safety Advisory Group	Ongoing	Site Inspections of parks before and after large events

<b>Quality and Accessibility</b>			
<b>Action</b>	<b>Responsible Team</b>	<b>Timeframe</b>	<b>Milestones/Outcomes</b>
Review the categorisation of all green spaces to better understand them and identify suitability for investment.	Parks Policy/ Environmental Operations/ Planning	Short (1-2 years)	Completion of categorisation review.
Undertake a service standard review based on the new categorisation and resources, setting specific maintenance standards for different park types.	Environmental Operations/Parks Policy	Short (1-2 years)	Completion of service standard review. Implementation of new maintenance standards.
Conduct a full infrastructure asset inventory and identify maintenance needs and assess the condition of park furniture.	Corporate Estate, Parks Infrastructure/Environmental Operations	Medium (3-5 years)	Completion of infrastructure asset inventory review.
Develop a planned preventative maintenance programme, which will be supported by GiS mapping tools.	Parks Infrastructure/Environmental Operations/ GiS	Short (1-2 years)	Development of maintenance and repair framework. Adherence to inspection and repair schedule.
Promote and increase the use of online tools for residents to report issues, ensuring that trace forms are present. Analyse data to identify frequently reported issues and areas needing attention, ensuring interventions are data driven.	Environmental Operations/ Digital Services/Communication	Medium (3-5 years)	Increase in the number of issues reported via online tools. Reduction in response times. Identification of trends and hotspots.



Monitor response rates and identify trends and hotspots for intervention, using data to guide prioritisation and ensure targeted action.	Environmental Operations	Ongoing	Improvement in response rates. Number of interventions in identified hotspots.
Complete a review of park building stock to assess current conditions and future needs.	Parks Policy/Corporate Estates	Medium (3-5 years)	Completion of building stock review.
Develop and implement Park Management Plans for all Local and District Parks to ensure structured management.	Parks Policy in consultation with relevant officers	Medium (3-5 years)	Number of Site Management Plans developed. Implementation of Site Management Plans.
Use the ranking in Good Parks for London as a benchmarking tool and aim to achieve high satisfaction in all categories, using data to guide improvements.	Parks Policy	Ongoing	Improvement in Good Parks for London ranking. High satisfaction ratings in all categories.
Retain Green Flag Status for all parks throughout the strategy period.	Environmental Operations	Ongoing	Green Flag status retained for all parks.
Deliver the Flagship Action: Secure two new Green Flag parks (Riverside Park and Chandos Recreation Ground), keep the status for all six of our Green Flag parks and prepare West Harrow Recreation Ground for Green Flag status in 2026/27	Parks Policy/Environmental Operations	2025 -26 Then ongoing to retain award.	Receipt of the new Green Flag Awards for Chandos Recreation Ground, Riverside Park and West Harrow Rec

Learn from other organisations and actively participate in London-wide Park initiatives.	Parks Policy	Ongoing	Participation in initiatives. Adoption of best practices.
Increase satisfaction rates for parks and green spaces in the Resident Sentiment Survey, using the data to drive further improvements.	All	Annually	Increased satisfaction rates in the survey.
Undertake a full review of the Parks webpage and ensure that content is up to date and regularly updated.	Parks Policy/Comms/Digital	Short (1-2 years)	Completion of website review. Regular updates implemented.
Include access information on our website for all Local and District parks to ensure visitors are informed of facilities prior to their visit.	Parks Policy/Comms/Digital	Short (1-2 years)	Access information added and updated regularly on the website.
Introduce a page on the website which highlights all activities taking place across the parks. This would include regular walks, working parties or events.	Parks Policy / Comms/ Digital	Short (1-2 years)	Introduce page and introduce a system to regularly update it.
Work alongside the Harrow Association of Disabled People (HAD) and other partners to design an Access Audit Review/Report for our sites, identifying existing barriers and ensuring that best practices are used in future planning.	Parks Policy/HAD/Public Health	Medium (3-5 years)	Access Audit Report developed. Best practices identified for future planning.
Undertake the Access Audit for all our sites and include this in their Management Plans, prioritising Local and District Parks and Nature Reserves.	Parks Policy	Medium (3-5 years)	Access Audits completed and incorporated into Management Plans.
Explore external funding sources for addressing access barriers in our sites.	External Funding Manager/Parks Policy/ PH	Medium (3-5 years)	Identification of suitable external funding sources.

Improve signposting to green spaces from key locations such as High Streets, stations, schools, and business centres.	Parks Policy/GIS team/	Medium (3-5 years)	Improved signposting implemented.
Enhance the visitor experience by providing welcome signage at key park entrances.	Parks Infrastructure	Short (1-2 years)	Welcome signage installed at key entrances.
Identify resources to support the implementation of initiatives to design out crime	Community Safety/ Parks Policy	Medium (3-5 years)	

Nature and Sustainability			
Action	Team	Timeframe	Milestone/KPI
Identify suitable sites for woodland creation to provide benefits such as atmospheric carbon capture, biodiversity enhancement, and improved amenity value.	Biodiversity Officer/Nature Ranger/Tree Team/Parks Policy	Short (1-2 years)	Completion of site identification for woodland creation.
Increase the park tree stock and linear metres of hedgerow where appropriate, with clear KPIs for monitoring growth	Biodiversity Officer/Nature Ranger/Tree Team/Parks Policy	Medium (3-5 years)	
Ensure woodlands are managed in accordance with environmental standards and assess management needs regularly.	Biodiversity Officer/Environmental Operations	Medium (3-5 years)	Woodlands managed to agreed standards and assessed annually.
Produce nature conservation management plans for all green spaces with wildlife designations (e.g., SSSIs, LNRs).	Biodiversity Officer/Environmental Operations	Medium (3-5 years)	Completion of management plans for all designated sites prioritised rolling programme.

Continue partnership work with HNCF to deliver the objectives of the open space strategy, particularly in Local Nature Reserves and Conservation Sites.	Environmental Services/Biodiversity Officer	Ongoing	Collaborative projects delivered in key conservation areas.
Review governance and responsibilities for Nature Reserve sites as between Harrow Nature Conservation Forum and the Council.	Climate Change and Natural Resources/ Environmental Services	Medium (3-5 years)	Completed review and implementation of improvements.
Work with schools and youth organisations to increase children's participation in conservation projects to foster long-term engagement and understanding of nature (e.g., tree planting, habitat restoration).	Community Engagement/Biodiversity Officer, Children Services, Climate Change and Natural Resources	Medium (3-5 years)	Number of children involved in conservation projects.
Collaborate with partners and volunteers to implement management plans at designated sites.	Biodiversity Officer/ Environmental Operations	Medium (3-5 years)	Rolling programme as Management Plans are developed to include periodic reviews.
Increase habitat data input into GiGL and develop a method to review habitat conditions, enabling evidence-based interventions.	Biodiversity Officer/Environmental Operations	Medium (3-5 years)	Increased data input into GiGL and development of habitat review methods. Look to do this by training volunteers
Increase knowledge and understanding of nature conservation within the Green Team through targeted training sessions.	Biodiversity Officer/Environmental Operations	Medium (3-5 years)	Number of training sessions delivered and staff participation.

Increase public awareness of conservation efforts via communication campaigns, including semi-permanent signage during works, and seek external funding for information boards to engage the public with the borough's natural environment.	Parks Policy/Comms/Biodiversity Officer/ Environmental Operations	Ongoing	Implementation of communication campaigns and signage at key sites.
Choose drought-resistant, ecological and sustainable planting where possible to contribute to long term sustainability.	Parks Policy/Biodiversity Officer	Short (1-2 years)	Successful implementation of sustainable planting schemes.
To consider the opportunities for Harrows Parks and open spaces to contribute to the delivery of the London Local Nature Recovery Strategy	Planning/ Climate Change and Natural Resources/ Environment Operations	Short (1-2 years)	

<b>Health and Wellbeing</b>			
<b>Action</b>	<b>Responsible Team</b>	<b>Timeframe</b>	<b>Milestone/KPI</b>
Where possible, prioritise investment in green spaces in areas with high levels of health deprivation	Parks Policy, Planning	Ongoing	Investment targeted in high-deprivation areas; measurable improvement in green space accessibility.
Support and facilitate the objectives of the Indoor and Outdoor Sports Facilities Strategy 2024-37	Parks Policy, Sports Development	Ongoing	Progress on strategy objectives; increased number of accessible sports facilities.

Create and promote measured and signposted walking routes in suitable parks	Parks Infrastructure, Communications	Medium (3-5 years)	Number of walking routes developed and signposted; increase in foot traffic.
Seek external funding to develop and improve sports facilities in parks and green spaces	Parks Policy, External Funding Manager/ Sports Development	Ongoing	Amount of external funding secured; improvements in sports facilities.
Continue to invest in the Green Grid to better connect our parks and make them more welcoming	Planning, Parks Policy	Ongoing	Improved connectivity between green spaces; increase in local foot traffic to parks.
Develop and promote walking routes connecting green spaces and communities across Harrow, prioritising areas of deprivation	Parks Policy, Public Health, Communications, Transport	Medium (3-5 years)	Completion of walking routes; increased usage in deprived areas.
Promote active travel to green spaces	Transport	Ongoing	Increased number of people walking or cycling to parks; reduction in car usage to parks.
Promote the mental and physical benefits of spending time in parks and green spaces	Parks Policy, Communications/Public Health	Short (1-2 years)	Campaign launch; increased engagement with parks.
Explore new ways of promoting walking routes using technology (e.g., walking apps)	Parks Policy, IT/Communications	Medium (3-5 years)	Development and promotion of walking apps; engagement metrics.
Increase volunteering opportunities in parks that support residents' mental and physical health	Community Engagement, Parks Policy, Public Health	Ongoing	Increased number of volunteers; positive feedback on volunteer experience.



Work alongside Public Health Team to facilitate green social prescribing in our parks and explore opportunities.	Parks Policy, Public Health, Sports Development	Medium (3-5 years)	
Develop mental health-focused initiatives, such as outdoor mindfulness or therapeutic programmes	Public Health, Parks Policy	Medium (3-5 years)	Mental health programmes introduced; participation rates and feedback.
Implement a system for monitoring and evaluating the health outcomes of green space use	Parks Policy, Public Health, Communications	Ongoing	Feedback mechanisms in place; evidence of improved physical and mental health outcomes.

Community			
What	Who	When	Milestones/KPIs
Offer clear and easily accessible information about the Parks Service and any changes that may impact service users via our website, social media, and other comms channels.	Communications Team	Ongoing	Increase in online engagement (website visits, social media interactions).
Increase the use of My Harrow Talk for consultation on changes to parks.	Environmental Operations/Communications/Community engagement	Ongoing	Number of consultations and feedback received.
Continue to consult local Park User Groups and local stakeholders when	Community Engagement Team (information to be provided by Environmental Operations/Infrastructure and other)	Ongoing	Number of consultations held engagement levels.

changes are proposed to their green space.			
Continue to work with Harrow Parks Forum as a key partner in delivering the aims of the open space strategy.	Community Engagement Team (information to be provided by Environmental Operations/Infrastructure and other)	Ongoing	Ongoing partnership activities and collaboration.
Conduct a review of how the Park User Group (PUG) function operates and explore how best the Council can support them.	Community Engagement Team	Short Term (1-2 years)	Review completion, recommendations for improvement.
Promote and facilitate a range of different volunteering opportunities across our parks.	Community Engagement Team/ Public Health	Ongoing	Increase in volunteer sign-ups, number of active volunteers.
Work with the Young Harrow Foundation (YAH) to promote volunteering opportunities and projects in our parks to young people.	Community Engagement Team/ Parks Policy/Sports Development/Public Health	Ongoing	Number of young people participating in park-based volunteering.
Identify external funding opportunities for community engagement projects, particularly in areas where residents are less engaged.	Parks Policy/ External Funding Manager	Ongoing	Number of funding opportunities identified; projects funded.
Offer training to our volunteers and continue to review the suitability and appropriateness of the training.	Community Engagement Team	Ongoing	Number of training sessions held volunteer feedback on training.

# Appendix 1: Definitions of Categories of Green Spaces in Harrow

Harrow's Open Spaces have been categorised using elements of the London Plan with amendments to ensure that they reflect recognised characteristics for Harrow.

**Local and District Parks:** Harrow features several well-established parks, including Harrow Recreation Ground, Pinner Memorial Park, and Roxeth Recreation Ground, which offer a range of amenities such as playgrounds, sports facilities, walking paths, and picnic areas.

**Amenity Green Spaces:** Scattered throughout the borough are smaller play areas and green spaces, which provide essential play and leisure opportunities, especially in urban neighbourhoods with less access to larger parks.

**Playing Fields:** Characterised in Harrow as open spaces where organised sporting activities predominate horticultural or other recreational features. They are generally large areas of mainly flat close grown grass that are marked and lined for various sports throughout the year to reflect leagues and sporting seasons. (Hatch end Playing Field and John Rumney Playing Fields)

**Nature Reserves and Nature Conservation Areas:** Harrow has areas dedicated to conservation and biodiversity, such as Bentley Priory Nature Reserve and Stanmore Common. These spaces support a variety of wildlife and plant species, contributing to the borough's ecological richness. These sites may have a statutory designation (e.g. SSSI) or a non-statutory designation (e.g. SINCS) and consist of predominantly rural heath, meadow or woodland.

**Green corridors:** Access corridors such as footpaths and railway lines provide linear landscapes that also offer opportunities for natural colonisation and provide linkages for wildlife as well as people, such as the Belmont Trail. They provide functional spaces for travelling without encountering road traffic, but also environments suited for exercise such as walking, jogging and equestrianism.

Management regimes for each of these categories will be resource determined, and interventions or projects may be more appropriate in one over another.

*Whilst we recognise that these other areas hold natural capital and potential, for the purpose of this study, the following categories are excluded:*

**Allotments:** These are areas of land set aside for the cultivation of produce, and they are valuable because in addition to this functional role they support social interaction, health, and sustainability. They are particularly important in denser-populated areas

*where garden space is limited or absent. There are 37 allotment sites in Harrow, and over 1,350 plots.*

***Cemeteries and Churchyards:*** *primarily functional spaces in which the dead are buried, but they can have significant secondary roles as places of quiet reflection, and as environmental and wildlife havens, especially in the urban context.*

DRAFT

# Appendix 2 - List of Sites with Categorisation

Name of Site	Category	Address
Alexandra Park	Local and District Park	33 Alexandra Ave, Harrow HA2 8PX
Bannister Sports Centre (Roger Bannister Sports Centre)	Playing Field	Uxbridge Rd, Harrow HA3 6SW
Belmont Trail	Green Corridor	Christchurch Avenue, Wealdstone
Bentley Priory Nature Reserve	Nature Reserve & Conservation Area	Common Road, Stanmore
Bentley Priory Open Space	Nature Reserve & Conservation Area	Common Road, Stanmore
Bernays Gardens	Amenity Green Space	Church Lane, Stanmore
Boulevard Gardens	Amenity Green Space	22 Capel Gardens, Pinner HA5 5RG
Bridge Street Gardens	Amenity Green Space	2 Bridge St, Pinner HA5 3JE
Brockhurst Corner Open Space	Amenity Green Space	Clamp Hill, Harrow Weald
Brockley Hill Open Space	Amenity Green Space	Cleopatra Close, Stanmore
Byron Park	Local and District Park	Peel Road, Wealdstone
Canons Park	Local and District Park	Donnerfield Avenue, Edgware
Cedars Open Space	Local and District Park	Chicheley Gardens

Centenary Park	Local and District Park	Culver Grove, Stanmore
Chandos Recreation Ground	Local and District Park	Camrose Avenue, Edgware
Church Farm Open Space	Amenity Green Space	Paines Ln, Pinner HA5 3BL
Church Fields	Nature Reserve & Conservation Area	Bessborough Rd, Harrow HA1 3DF
Cloisters Wood	Nature Reserve & Conservation Area	Dennis Ln, Stanmore
Cuckoo Hill Open Space	Green Corridor	Celandine Rte, Pinner HA5 1BY
Glenthorne (part of Bentley Priory)	Nature Reserve & Conservation Area	Common Road, Stanmore
Greenway Open Space	Amenity Green Space	Greenway, Pinner
Grimsdyke Open Space	Nature Reserve & Conservation Area	10 Old Redding, Harrow HA3 6SF
Grove Fields Open Space	Amenity Green Space	Stanmore HA7 4LQ
Harrow Garden Village	Amenity Green Space	Rayners Lane, Pinner HA5 5DW
Harrow Recreation Ground	Local and District Park	Roxborough Rd, Harrow HA1 1PB
Harrow Weald Common	Nature Reserve & Conservation Area	Old Redding, Harrow Weald, HA3 6SF
Harrow Weald Recreation Ground	Local and District Park	High Rd, Harrow HA3 6EJ
Hatch End Riverside Park	Amenity Green Space	Uxbridge Rd, Pinner HA5 4EA
Hatch End Playing Fields	Playing Field	Uxbridge Rd, Pinner HA3 6PF
Headstone Manor	Local and District Park	Pinner View, Harrow HA2 6PX

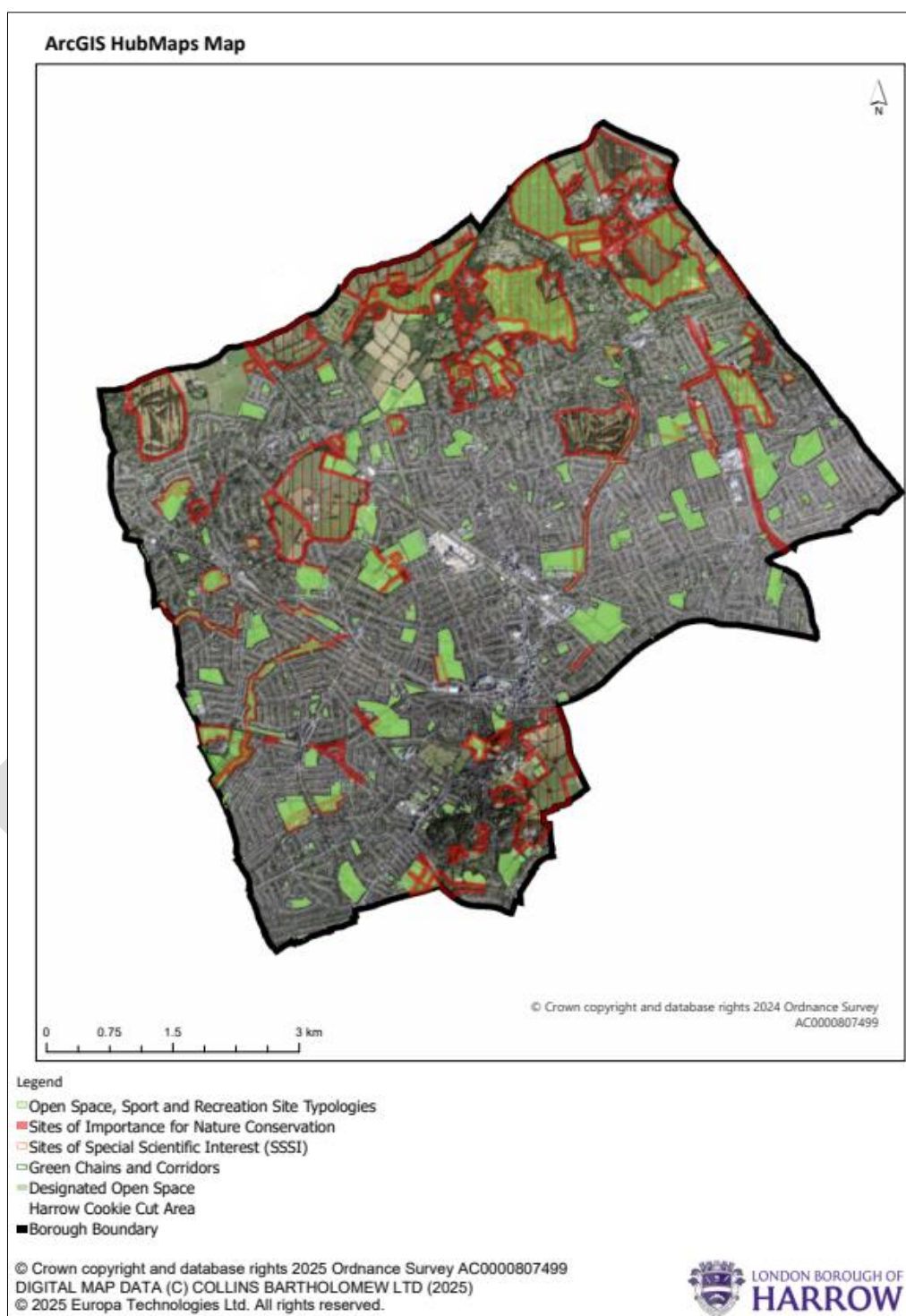


Headstone Green (formerly known as St. George's Field)	Amenity Green Space	Umpire Way
Hooking Green	Amenity Green Space	Hooking Gr, North Harrow
John Rumney Playing Fields	Playing Field	Uxbridge Rd, Harrow HA3 6PU
Kenton Recreation Ground	Local and District Park	39A Carlton Ave, Harrow HA3 8AX
Lake Grove Open Space	Amenity Green Space	Dalkeith Grove, Edgware, Stanmore HA7 4SQ
Levels Wood (part of Harrow Weald common)	Nature Reserve & Conservation Area	Levels Wood, Harrow HA3 6SF
Little Common Pinner	Local and District Park	Elm Park Rd, Pinner HA5 3LA
Little Common Stanmore	Amenity Green Space	Little Common, Stanmore HA7 3BZ
Lowlands Recreation Ground	Local and District Park	73 Lowlands Rd, Harrow HA1 3AW
Lynwood Close Open Space	Amenity Green Space	Lynwood Cl
Melbourne Avenue Open Space	Amenity Green Space	Melbourne Avenue, Harrow
Montesole Playing Fields	Local and District Park	1 Antoneys Cl, Pinner HA5 3LP
Montrose Walk	Green Corridor	Stanmore HA7 3QA
Newton Farm Ecology Park	Nature Reserve & Conservation Area	Rayners Lane, Harrow
Newton Park West	Local and District Park	Alexandra Avenue
Parish Fields	Nature Reserve & Conservation Area	Old Redding, Harrow Weald
Pear Wood	Nature Reserve & Conservation Area	Wood Lane, Stanmore, HA7 4AP
Pinner Memorial Park	Local and District Park	W End Ln, Pinner HA5 1AE

Pinner Recreation Ground	Local and District Park	99 W End Ln, Pinner HA5 3PL
Pinner Village Gardens	Local and District Park	Pinner Grove, Pinner HA5 5NZ
Priestmead Recreation Ground	Local and District Park	Halford Avenue Kenton Harrow HA3 8SY
Queensbury Recreation Ground/Park	Local and District Park	Clifton Rd, Kenton, Harrow HA3 9PD
Rayners Mead	Local and District Park	Rayners Lane, Harrow HA2 7LT
River Pinn Open Space	Green Corridor	7 W End Ln, Pinner HA5 1EQ
Roxbourne Park	Local and District Park	Cannon Ln, Harrow, Pinner HA5 1JF
Roxbourne Rough	Nature Reserve & Conservation Area	Cannon Ln, Harrow, Pinner HA5 1JF
Roxeth Recreation Ground	Local and District Park	Kingsley Rd, South, Harrow HA2 8LF
Saddlers Mead	Local and District Park	Clonard Way, Hatch End
Shaftsbury Playing Fields/ Recreation Ground	Playing Field	Grimsdyke road, Hatch End
Stanmore Common	Nature Reserve & Conservation Area	Warren Lane, Stanmore, HA7 3HQ
Stanmore Country Park	Nature Reserve & Conservation Area	Kerry Ave, Stanmore HA7 4NN
Stanmore Marsh	Nature Reserve & Conservation Area	Marsh Lane, Harrow, HA8 6QZ
Stanmore Park Estate Open Space	Amenity Green Space	Trenchard Cl, Stanmore HA7 3SS
Stanmore Recreation Ground	Local and District Park	Stanmore Hill, Stanmore HA7 3DS

Streamside Reservation	Green Corridor	Church Avenue, Pinner
Sylvia Avenue Open Space	Nature Reserve & Conservation Area	125 Sylvia Ave, Pinner HA5 4QL
The Croft Playing Fields	Local and District Park	Cannonbury Avenue, Pinner
The Grove Open Space	Amenity Green Space	Lowlands Road
Thackeray Open Space (Beacon Centre)	Amenity Green Space	Goldsmith Close, Harrow
Tookes Green	Amenity Green Space	199 Moss Ln, Pinner HA5 3BE
Viewpoint	Amenity Green Space	10 Old Redding, Harrow HA3 6SL
Weald Village Open Space	Amenity Green Space	5 The Bye Way, Harrow HA3 7EF
Weald Wood	Nature Reserve & Conservation Area	Old Redding, Harrow HA3 6SF
West Harrow Recreation Ground	Local and District Park	South Harrow, Harrow HA2 0RG
Western Common	Nature Reserve & Conservation Area	Old Redding, Harrow Weald
Whitefriars Open Space	Amenity Green Space	Whitefriard Avenue Harrow HA3 5NX
Wood Farm	Nature Reserve & Conservation Area	17 Wood Ln, Stanmore HA7 4LJ
Woodlands Open Space	Amenity Green Space	Cambridge Rd, Harrow HA2 7LA
Yeading Walk Open Space	Green Corridor	Rayners Lane, Pinner
Wemborough Road Recreation Ground	Amenity Green Space	Wemborough Rd, Stanmore HA7 2EA

# Appendix 3 – Map of Harrow Parks and Open Spaces



# Appendix 4 – Overview of Features and Facilities per Site

The table below outlines the key features and facilities available across the borough.

This list is being reviewed and will be updated as part of the strategy Action Plan and in line will be used to improve our information on the Council's website.

## Local and District Parks

Name of Site	Key Facilities/Features
Alexandra Park	Basketball, Playground, Gardens, Green Gym, Events, Active Park User Group, Car Park
Byron Park	Basketball, Bowling Green (Members only), Children's Playground, Football, Green Gym, Skate Park, Events
Canons Park	Green Flag Award, Grade II Listed Walled Garden, Playground, Coffee Shop, King George V Memorial Garden, Pond, Nature Trail, Green Gym, Woodland, Events, Active Park User Group
Centenary Park	Children's Playground, Coffee Shop, Football, Gardens, Green Gym, Tennis, Park User Group
Chandos Recreation Ground	Playground, Cricket, Football, Green Gym, Changing Facilities, Nursery, Car Park, River, MUGA, Tennis, Events, Active Park User Group
Harrow Recreation Ground	Green Flag Award, Basketball, Peace Garden, Coffee Shop, Bowling Green (Members only), Car Park, Playground, Cricket (Club use only), Football, Green Gym, Multi-use Courts, Tennis, Victorian Shelters, Events, Active Park User Group

Headstone Park	Manor	Green Flag Award, Basketball, Car Park, Changing Facilities, Children's Playground, Coffee Shop, Cricket (Clubs only), Football, Green Gym, Museum, Orchard, Tennis, Pond, Duck Feeder, Events, Active Park User Group
Kenton Ground	Recreation	Green Flag Award, Basketball, Car Park, Children's Playground, Cricket, Football, Green Gym, Multi-use Courts, Tennis, BMX Pump Track, Orchard, Events, Lake, Park User Group
Lowlands Ground	Recreation	Children's Playground, Café, Basketball, Performing Arts School and Stage, Table Tennis, Green Gym
Montesole Fields	Playing	Basketball, Car Park, Children's Playground, Cricket, Nursery, Football, Green Gym, Hockey, Tennis, Active Park User Group
Newton Park West		Basketball, Children's Playground, Green Gym, Meadows, Pond and Stream, Wetland
Pinner Memorial Park		Green Flag Award, Aviary, Bowling Green (Members only), Car Park, Children's Playground, Coffee Shop, Ornamental 'Peace Garden', Green Gym, Museum, Pond, Duck Feeder, Rockery, Woodland, Events, Active Community Association
Pinner Ground	Recreation	Children's Playground, Wood Meadow
Pinner Gardens	Village	Basketball, Children's Playground, Climbing Wall, Green Gym, Wild Areas, Gardens, Pond, Table Tennis, Tennis, Events, Active Park User Group
Priestmead Recreation Ground		Children's Playground, Green Gym, Circular Path
Queensbury Recreation Ground/Park		Basketball, Children's Playground, Football, Green Gym, Multi-use Courts, Pond, Wetlands, Events, Tennis
Rayners Mead		Children's Playground, Tennis, Green Gym, Ornamental Planting, Active Park User Group

Roxbourne Park	Basketball, Car Park, Changing Facilities, Children's Playground, Cricket, Football, Green Gym, Miniature Railway, River, Wild Areas, Events, Active Park User Group
Roxeth Recreation Ground	Green Flag Award, Car Park, Children's Playground, Cricket, Football, Green Gym, Tennis, Wild Areas, Events, Active Park User Group
Saddlers Mead	Children's Playground, Green Gym, Cricket, Football
Stanmore Park Estate Open Space	Small Open Space, Children's Playground
The Croft Playing Fields	Football, Children's Playground, Green Gym, Active Park User Group, Basketball, Harrow Boxing Club (Pavilion)
West Harrow Recreation Ground	Bowling Green (Members only), Car Park, Changing Facilities, Children's Playground, Coffee Shop, Cricket, Football, Green Gym, Shelter, Tennis, Multi-use Courts, Conservation Area, Events, Active Park User Group

## Nature Reserves & Conservation Areas

Name of Site	Key Facilities/Features
<b>Bentley Priors Nature Reserve</b>	Site of Special Scientific Interest (SSSI), Nature Reserve, Pond, Wildflower Meadow, Woodland, Nature Trail, Wild Areas, Harrow Nature Conservation Forum (HNCf), Private Deer Park, Cattle
<b>Church Fields</b>	Wildflower Area, Harrow Nature Conservation Forum (HNCf)
<b>Cloisters Wood</b>	Woodland (Part of Stanmore Country Park), Harrow Nature Conservation Forum (HNCf)
<b>Grimsdyke Open Space</b>	Originally part of the gardens of the Gryms Dyke Hotel – Grade II listed building, Home to interesting non-native trees, including giant redwoods



<b>Harrow Weald Common</b>	Woodland, Nature Trails, Harrow Nature Conservation Forum, SINC
<b>Harrow Weald Recreation Ground</b>	Basketball, Bowling Green (Members only), Car Park, Changing Facilities, Children's Playground, Coffee Shop, Cricket (Clubs only), Football (Clubs only), Green Gym, Tennis, Events, Active Park User Group
<b>Levels Wood (Part of Harrow Weald Common)</b>	Ancient Woodland, Nature Trails/Walks, Harrow Nature Conservation Forum (HNCf)
<b>Newtown Farm Ecology Park</b>	Wild Areas, Wildlife, Healing Garden, Meadows, Car Park, Pond
<b>Pear Wood (Stanmore Country Park)</b>	Ancient Woodland, Nature Trails, Pear Wood Cottages Ruins
<b>Stanmore Common</b>	Wild Areas, Nature Trail, Woodland, Wetlands, Acid Grassland and Heath, Active Park User Group, Car Park
<b>Stanmore Country Park</b>	Woodland, Wildflower Meadow, River, Nature Trail, Viewpoint, Harrow Nature Conservation Forum (HNCf)
<b>Stanmore Marsh</b>	Children's Playground, Pond, River, Wild Areas, Harrow Nature Conservation Forum (HNCf)
<b>Sylvia Avenue Open Space</b>	Wild Area for Nature, Secondary Woodland, Orchard, Pond, Part of the London LOOP, Harrow Nature Conservation Forum (HNCf)
<b>Wood Farm</b>	Wildflower Meadow, Pond, Wildlife, Nature Trail/Loop, Viewpoint, Harrow Nature Conservation Forum (HNCf)
<b>Woodlands Open Space</b>	Small Grassed Area

## Amenity Green Spaces

Name of Site	Key Facilities/Features
<b>Bernays Gardens</b>	Small Walled Garden, Events, Active Park User Group
<b>Boulevard Gardens</b>	Small Ornamental Garden, Seating, Part of Pinner Road Conservation Area
<b>Bridge Street Gardens</b>	Small Ornamental Garden, Bridge, Seating, Active Community Group
<b>Brockhurst Corner Open Space</b>	Children's Playground, Small Green Space, Nature Walks
<b>Brockley Hill Open Space</b>	Meadow Areas, Entrance to Stanmore Country Park
<b>Greenway Open Space</b>	Children's Playground, Small Grassed Area
<b>Hatch End Riverside Park</b>	Café (Harrow Arts Centre), Children's Playground, Outdoor Performance Stage, Public Toilets, River, Wildflower Meadow, Woodland, Active Park User Group
<b>Lake Grove Open Space</b>	Small Open Space, Lake, Woods
<b>Little Common Pinner</b>	Grassed Area, Circular Path
<b>Little Common Stanmore</b>	Small Open Space, Wood Lane Pond
<b>Lynwood Close Open Space</b>	Small Open Space

<b>Melbourne Avenue Open Space</b>	Small Open Space
<b>Roxbourne Rough</b>	Wild Part of Adjacent Roxbourne Park, Large Grassy Meadow, Harrow Nature Conservation Forum (HNCf)
<b>The Grove Open Space</b>	Open Grass Area, Statue
<b>Thackeray Open Space</b>	Children's Playground, Small Grassed Area
<b>Tookes Green</b>	Small Grassed Area, Heritage Drinking Fountain, Viewpoint
<b>Weald Village Open Space</b>	Small Open Space, Children's Playground, Green Gym, Multi-use Court
<b>Whitefriars Open Space</b>	Small Grassed Area, Wild Areas, Events and Activities, Active Park User Group

### Green Corridors

<b>Name of Site</b>	<b>Key Facilities/Features</b>
<b>Belmont Trail</b>	Walking and Cycling Route, Rewilded Old Railway Line, Nature Trail, Wild Areas, Active Park User Group
<b>Cuckoo Hill Open Space</b>	Walking Route along the River Pinn, Allotment Site, Celandine Route
<b>Montrose Walk</b>	Short Linear Walk, Wild Area
<b>River Pinn Open Space</b>	Short Linear Walk, Wild Area
<b>Streamside Reservation/Open Space</b>	Short Walking and Cycling Trail along the Yeading Brook, River, Wild Area

<b>Yeading Walk Open Space</b>	Linear Walk, Walking Nature Trail, Woodland, Wildlife, Orchard, Willow Tree Walk, River, Active Park User Group
--------------------------------	---

DRAFT