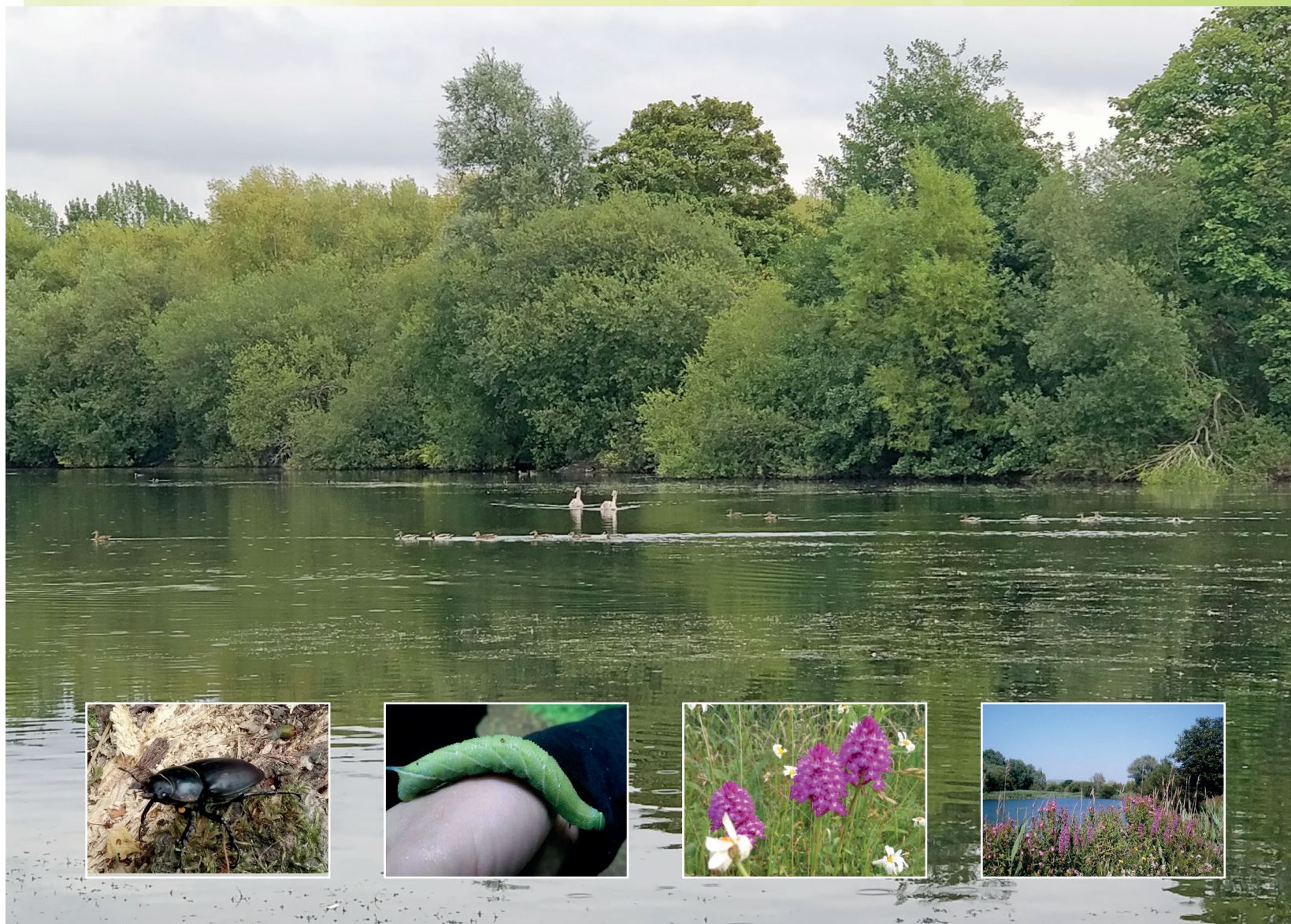


Hounslow Countryside Service

Environmental Education Pack

FOR TEACHERS AND SCHOOL GROUPS



London Borough
of Hounslow

www.hounslow.gov.uk



Contents

Bedfont Lakes Country Park..... 3
 Hounslow Heath LNR..... 4
 Activities..... 5
 Ranger Visits..... 8
 Animal Mobile Visits 8
 Booking form 9
 Pricing for group visits 11
 Health and Safety Information 11

What do we provide?

- A group visit to one of our Countryside sites
- A tailor made trip to meet the individual educational needs of your group
- A wide range of fun, educational activities to choose from that can be linked to current curriculum learning
- Experienced and knowledgeable rangers to lead and assist with your group visits
- Assistance given to teachers when completing risk assessments for the group visit

Where do we run our sessions?

Most of our sessions are run at Bedfont Lakes Country Park, but also Hounslow Heath Local Nature Reserve and Crane Valley Park Local Nature Reserve. Lampton Greenspace 360 are also responsible for a number of other sites across the Borough of Hounslow, so if you have a public green space close to your school or setting that you would like to use, please feel free to contact us to discuss some options.

Teacher-led visits

If you are thinking of carrying out your own teacher-led visits to one of our parks, you are more than welcome to do so! All we ask is that you notify us prior to your visit and tell us what you are planning to do, this means we can notify you of any events or activities going on on-site that day. We may also be able to give advice about suitable areas to use and activities to carry out.

We also offer:

- Mobile visits to your school, setting or venue
- Advice and assistance if you would like to run teacher-led activities at your own school or greenspace

Bedfont Lakes Country Park

Bedfont Lakes Country Park

Clockhouse Lane
Bedfont
Middlesex
TW14 8QA



Facilities on site

- Information centre with space for storing bags/lunchboxes and coats etc
- Toilets including a disabled toilet
- Car park with coach parking
- Children's play area and picnic benches
- Recreational grassland suitable for games
- Disabled access and wheelchair user friendly paths
- A pond dipping pond with pond dipping platform
- A large marquee suitable for lunchtime
- A variety of habitats including grassland, scrub and reed beds, meadows and woodland
- Bird hides and screens

How to get to Bedfont Lakes Country Park

Travelling by bus

- Take the 116 or H25 to Bedfont Green, then a short walk to Bedfont Lakes Country Park
- The H26 connects Feltham and Hatton Cross with Bedfont Lakes Country Park and stops at the Bedfont Road entrance

Travelling by car or coach

The car park closest to the information centre is accessed via the Clockhouse Lane entrance and can be reached using the postcode TW14 8QA

Travelling by train

Ashford station and Feltham station are the closest mainline train stations

Travelling by tube

Take the Piccadilly line to Hatton Cross and then a short bus ride on the H26





Hounslow Heath Local Nature Reserve

Hounslow Heath Local Nature Reserve

450 Staines Road
Hounslow
Middlesex
TW4 5AR



Facilities on site

- Car park with coach parking
- Toilet facilities for groups
- Lockable room for bag and coats etc
- Recreational grassland suitable for games
- A variety of different habitats including heathland, woodland, acid grassland, meadows and scrub

How to get to Hounslow Heath LNR

Travelling by Bus:

- The 116, 117, 235 and 237 buses stop at the Staines Road entrance to Hounslow Heath
- The 110, 111, and R62 stop at Simpson Road to the South of Hounslow Heath

Travelling by car or coach:

The only car park is situated at the main entrance to the Heath accessible by Staines Road

Travelling by train:

- The closest mainline station is Hounslow. From here the buses 237, 116 and 117 can complete your journey.
- Feltham station is also fairly close and the 235 bus can complete your journey.

Travelling by tube:

Take the Piccadilly line to Hatton cross underground station, then the 423 bus to Frampton road



Activities

Here you will find a list of ranger-led activities that we offer to our group bookings.

Our flexible programme allows you to choose which combination of activities you would like to include in your visit to best suit your curricular objectives and timescale.

Any combination of activities is possible, but do check they are

available at the particular site you wish to visit. We will then plan your day based on your choices.

For example, a possible day for a Key stage 2 Science based day at Bedford Lakes might include:

- Pond dipping, minibeast

habitat hunt, scavenger hunt and Orienteering.

Not all of the activities have to be carried out on your visit, you are more than welcome to use them back at your school or setting if you wish.

If worksheets, quizzes or

additional materials are required, we will usually send an email copy to your school or setting and ask that you print or photocopy them at school and bring them with you on the day. We do have pencils and clipboards available.

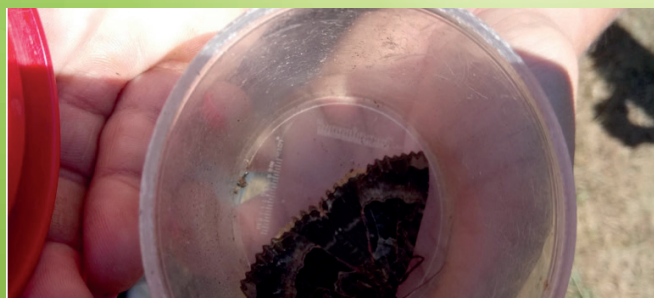
Minibeast Habitat Hunt

Subject: **Science (KS1, 2, 3)**

Duration: 45 minutes- 1 hour

Using a variety of techniques, the rangers will lead the group in search of small creatures living in a variety of different habitats; on trees, in long grass, in leaf litter and under logs and stones. The creatures can be collected in pots for examination and identification using some identification sheets.

This activity can also include a minibeast quiz, 'create your own bug' task, design your own minibeast habitat box, or a more in depth chat about the importance of minibeasts to our ecosystem.



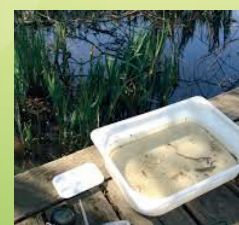
Pond Dipping

Subject: **Science (KS1, 2, 3)**

Duration: 45 minutes – 1 hour

Examine the variety of life in ponds. Learn how the animals have adapted to survive life under water, and compare different creatures that live there. The children use nets to sweep the water at different levels and deposit their findings into trays. The creatures are examined using magnifying lenses and identified using an identification sheet. We also have an aquascope which allows children to view the creatures under the water in their natural habitats.

Worksheets for recording findings can be provided if required, and additional activities such as a pond dipping quiz or pond bingo can be added for longer sessions.





Arts and Crafts Scavenger Hunt

Subject: **Art/ PSHE**

Duration: 45 minutes – 1 hour

Search for and collect a series of natural objects with a variety of textures, colours and physical properties to be used to create collages, pictures and crafts. This activity can be adapted for children of all ages. Children can also be divided into groups and work together to make large scale artwork on the floor to strengthen their co-operation and communication skills.

Also seasonally available; willow weaving (please contact us first to check)



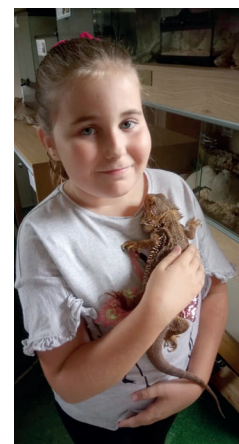
Animal Handling

Subjects: **Science**

Duration: 45 minutes – 1 hour

Meet, stroke and even hold some of our lovely animals here at Bedfont Lakes Animal Antics centre. With a range of creepy crawlies, reptiles, amphibians, mammals and birds, the children will enjoy a special opportunity to get up close and personal and have a unique learning experience. Children will learn about the different species, food chains and habitats of our animals; from rabbits and guinea pigs to snakes and lizards, there are plenty to meet!

This activity can be tailored to the children's current curriculum learning, just specify your current topic on your booking form and our rangers will focus on cementing that learning!



Shelter Building

Key Skills: **Co-operation, communication, imagination**

Duration: 30 minutes – 1 hour

Using logs, branches, leaves and reeds, and any other natural materials we can find, we will take the children on a journey and ask them to get their survival skills heads on to build a shelter structure to survive the night.

The shelter will need to be sturdy, comfortable and waterproof, and for larger groups a fire and toilet area, fences, tools or weapons can also be fashioned using the natural items in our education area. See how the children's skills might hold up if they ever found themselves in need of a shelter out in the wild!

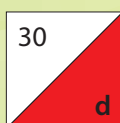


Orienteering

Subjects: **PE/Geography/Maths**
Duration: 45 minutes – 90 minutes

Bedfont Lakes has a fixed orienteering course aimed at beginners, so children can learn to navigate their way around the park, with or without the use of a compass. Your group can be split into teams to make this a fun and competitive orienteering challenge. They can all start at the information centre and head off in different directions to locate the lettered orienteering markers around the park and fill in on their maps. Timed for a fun challenge, and a great way of exploring the park and developing map reading and navigational skills.

Easy Orienteering

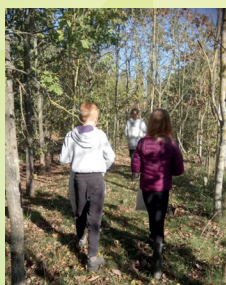


Wildlife Detectives Walk

Subject: **Science/Geography**
Duration: 30-45 minutes

Take a guided walk through a range of habitats and learn about the wildlife that lives there. Walks can be customised to a particular theme or topic (birds/habitats/seasons etc) and can include a quiz to test knowledge at the end.

This activity can also include a wildlife spotting sheet to take around, or a more independent approach where children must record any clues (feathers, poo, footprints) that they come across, as well as listing as much wildlife that they spot as they can.



Exploring Mammals

Subject: **Science (KS1, 2, 3)**
Duration: 30 minutes

What makes an animal a mammal? Using humane mammal traps, have the chance to see some of the small mammals found on our sites. Learn how to identify them and find out about their often secretive lives in the undergrowth.



Brilliant Birds

Subject: **Science (KS 2, 3)**
Duration: 30 minutes

Investigate the ways in which different birds in the park are adapted to their lifestyles by examining their beaks, feet and feathers. Compare different beak types to the tools humans use and discuss how these help them to survive.



Animal Babies

Subject: **Science (KS 2, 3)**
Duration: 30-45 minutes

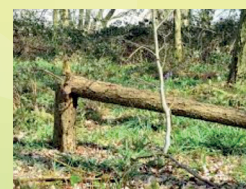
Explore and investigate the different ways that's mammals, birds and reptiles bring up their young, and how this may be different to us. Learn about the early stages of animal life and how they are adapted to life in the park.



Maths in Nature

Subject: **Maths (KS 1, 2, 3)**
Duration: 30 minutes – 1 hour

Explore how maths can be found all around us in our natural environment and is used to help us every day. Find maths connections in the park environment; sort and categorise animals and record findings; go on an angle hunt or play some points games or quizzes and graph your results.





Land Use History of Bedfont Lakes

Subject: **Geography (KS 2)**

Duration: 30 minutes

Location: Bedfont Lakes Country Park

A walk and talk about how the land use of Bedfont Lakes has changed over the centuries. Once a large orchard that supplied Covent Garden market; the site has since been used as a gravel and sand pit, then a refuse site, and finally opened as a country park in 1995.



Ranger Visits

If your school would like to take part in any of our ranger led activities but are unable to travel to one of our Countryside Sites, then our friendly and experienced rangers can come to you.

All you need is a small area with long grass, maybe some old logs, a wooded area or even a woodchip flower bed! We can explore any green space in your school to see what mini-beasts are lurking around, talk about habitats or even make some natural art.



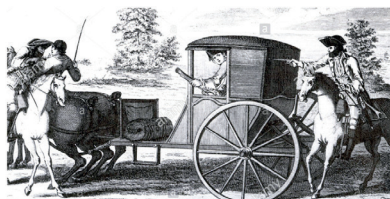
History of Hounslow Heath

Subject: **History (KS1, 2, 3)/Geography (KS2)**

Duration: 30 minutes

Location: Hounslow Heath

Learn about the Heath's fascinating history and the people who have lived here over the past few hundred years. Enjoy a



guided walk around this beautiful Local Nature Reserve and hear about the dangerous Highwaymen and women that once terrorised the land; Oliver Cromwell's army, and later the development of an aerodrome.

This activity can focus on The Heath's people (for KS 1, 2, 3 History) or on land use and environmental changes (for KS 2 Geography).

Do you have a green space available at your school or venue? Would you like to start a wildlife area or improve your existing habitats?

Our experienced and knowledgeable rangers can come to you and give expert advice to help your green space turn into a wildlife wonderland!

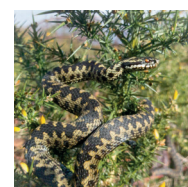
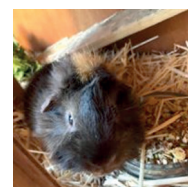
Animal Antics Mobile Visit

Why not book an animal mobile visit to your school, setting or chosen venue? With a selection of different birds, reptiles, mammals and amphibians; there are lots of friendly animals for everyone to meet. Our experienced rangers will give a talk about each animal, their habitat and diet, and can link this to several topics in the school curriculum such as food chains, adaptation, native/non-native species.

This is a fun hands on approach to get children interested and enthusiastic about nature and wildlife, and a chance to see, stroke and hold some beautiful animals.

Prices start from only £150.

Call or email for more details





School/Group Booking Form

Please indicate below which site you would like to visit (✓)

- Bedfont Lakes Country Park Hounslow Heath Crane Park
- Other (please specify):.....

Date of pre-visit (if required):

Date of group visit:..... Time of visit: from until

Contact name: Contact Number:

Contact email address:

School/Setting Name and address:.....

.....

.....Postcode:.....

Group Details

Group age:

Number of students:

Number of Teachers/assistants:.....

Number of additional adults (parents/helpers):.....

Any allergies/disabilities or medical information that we should be aware of?
.....
.....
.....

Has your school visited us before?

How did you hear about us?

What method of transport will you be using to get to us?

Which entrance will you be arriving at?

(All activities at Bedfont Lakes take part at the Clockhouse Lane entrance but a member of our ranger team would be happy to meet you at Bedfont Road)



School Booking Form (contd)

Activities

Please note that rangers may change or cancel certain activities due to weather or other circumstances beyond our control. We will always try to run your chosen activities where possible but if an activity has to be cancelled we will always try to replace it with a suitable alternative.

Activity choices:

1.....

2.....

3.....

4.....

5.....

6.....

Topics you are studying/curriculum links

A brief health and safety induction will be carried out when your group arrives. This usually last about 10 minutes.

Please allow for 10-15 minutes between each activity for hand washing etc.

For some activities classes will be split into smaller groups. If a class needs to be split into smaller groups, a ranger will advise this before completing the booking so that you can choose the groups before you arrive if you wish to.

Please ensure you have the correct number of adults to supervise the students at all times.

Please bring payment with you on the day (cash or cheque only).

Cheques should be made payable to: Lampton Greenspace 360 Ltd

Teacher/organisation name.....

Teacher/organisation signature:

Date

Please ensure a ranger has a copy of your risk assessment before the date of your visit.

Charges for group visits

Group visits usually run between 9am – 3pm Monday- Friday, however, if you would like to enquire about a group booking outside of these times please do not hesitate to get in touch and we can discuss your requirements and do our best to accommodate you.

Half day class visit:

9am-12pm OR
12pm-3pm
£4 per child
(15-30 children)

Full day class visit:

9am-3pm
£6 per child
(15-30 children)

Full day year group visit:

9am-3pm
£5 per child
(45-90 children)

Other options? Get in contact and we will give you a tailored quote.

For more information please contact our education rangers via email at countryside@hounslow.gov.uk

Health and Safety

Health and safety is paramount to all of our activities during all of our group visits. The notes below and overleaf set out the standards for visiting groups. These are necessary to ensure that groups visiting our sites receive the level of guidance, support and supervision required for a valuable learning experience. Please do follow guidelines set by your local Authority or parent organisation with regard to taking groups on trips and carrying out field work. Schools/ organisations have overall responsibility for the safety and well-being of children during their visit, including during ranger-led activities.

Risk Assessments

Schools/organisations are responsible for carrying out their own independent risk assessments for their visit, however, we can provide our own risk assessments as guidance. Please provide rangers with a copy of your risk assessment documents before your visit.

First Aid Provision

It is the responsibility of the school/organisation to provide first aid kits and qualified first aiders appropriate to the size of the group. It is the responsibility of the teacher, leader or

child's guardian to carry and administer any medication that may be required. Please do inform us if any of your group have any severe allergies or medical conditions.

Recommended pupil to adult ratios

Children aged birth to 5 years – 3:1

Children aged 6 to 8 years – 5:1

Children aged 8-18 years – 10:1

Please do not include any rangers in your ratios

Discipline

Please be aware that the rangers are not responsible for the discipline of the pupils and expect teachers and assistants to actively maintain control of the group. Should a child pose any danger to themselves or the rest of the group, he/she will no longer be allowed to take part in the activity.

Suitable Clothing

Our sites are large open spaces with limited shelter. It is the responsibility of the school or setting to ensure that children have the adequate clothing and appropriate footwear for the activity. Sun hats, sun cream and plenty of bottled water is advisable during the summer months. Long trousers are recommended to avoid grazes, scratches

and insect bites. We can advise on additional appropriate clothing prior to your visit.

Hand Washing

It is essential that children wash their hands after each activity, particularly after pond dipping and before eating, and do not put their fingers near their faces during the activities. Although rare, Weil's disease can be contracted through bodies of water, it is passed on through rat urine and efficient hand washing is the best way to avoid it. We also have anti-bacterial gel available.

Insurance

Copies of our insurance certificates are available upon request.

Cancellation or alternative activities

Unfortunately, it is sometimes necessary for rangers to cancel or change agreed activities if there are health and safety concerns or circumstances beyond the rangers control, but we will always do our best to match swap in something similar or relevant.

If your school or setting need to cancel a visit we ask that you let us know as soon as possible and we will be happy to arrange an alternative date.



.....

Please send your completed booking forms to:

Education Rangers,
Bedfont Lakes Country Park,
Clockhouse Lane, Bedfont, Middlesex TW14 8QA

Or email your completed form to: Countryside@hounslow.gov.uk

Once we have received your form we will contact you to confirm your booking and discuss the date for your visit.

If you would like further information please don't hesitate to contact us.

