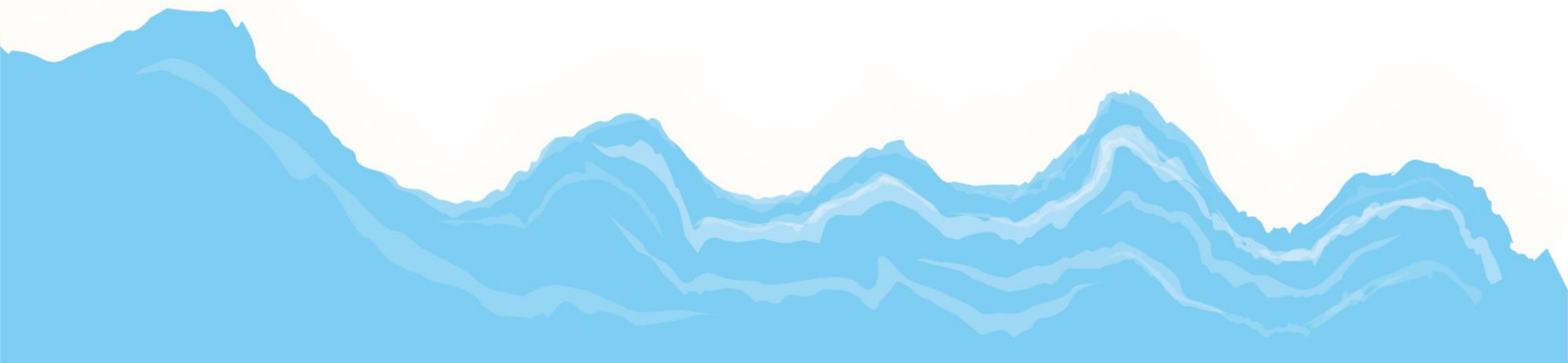




# Lyme Regis Cobb Stabilisation Scheme

## Commercial and Recreational Users Access Survey Findings



## Background

The Cobb stabilisation scheme aims to reinforce and repair the Cobb, which due to seafloor erosion has seen a significant destabilisation of the structure. The project aims to stabilise the Cobb to maintain its status as a breakwater, a coastal flood and erosion defence and a safe harbour for many different types of vessels and businesses.

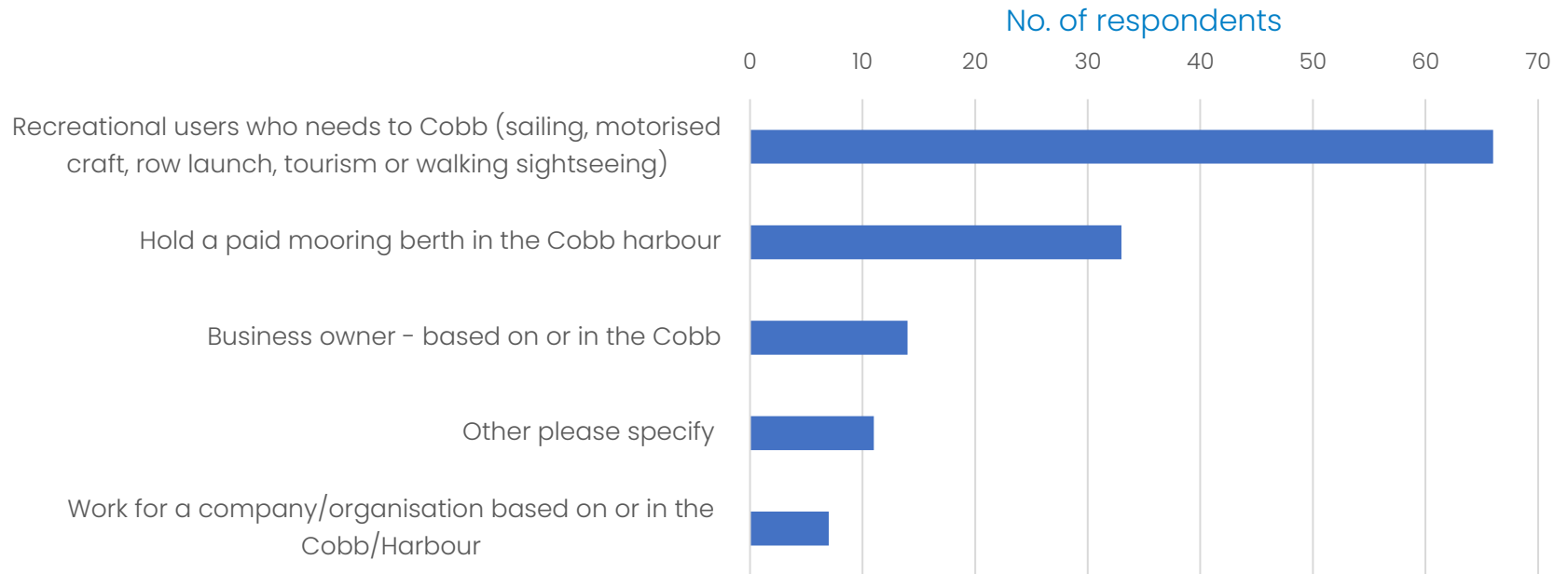
The Commercial and Recreational Users Access survey aimed to find out how and when commercial and recreational users access the Cobb. The survey was live between 31<sup>st</sup> August and 18<sup>th</sup> October 2023 and received 100 responses. The results, along with further engagement activities, will provide valuable information to the project team to help find the least disruptive solution to undertaking the essential stabilisation works.

Thank you to everyone who took part in the survey and we look forward to working with you further in the future.



James Mitchell  
Dorset Coast Forum  
Community and Stakeholder Lead for Lyme Regis  
Cobb Stabilisation Scheme  
[james.mitchell@dorsetcouncil.gov.uk](mailto:james.mitchell@dorsetcouncil.gov.uk)

## Question One: What is your interest in the Cobb?

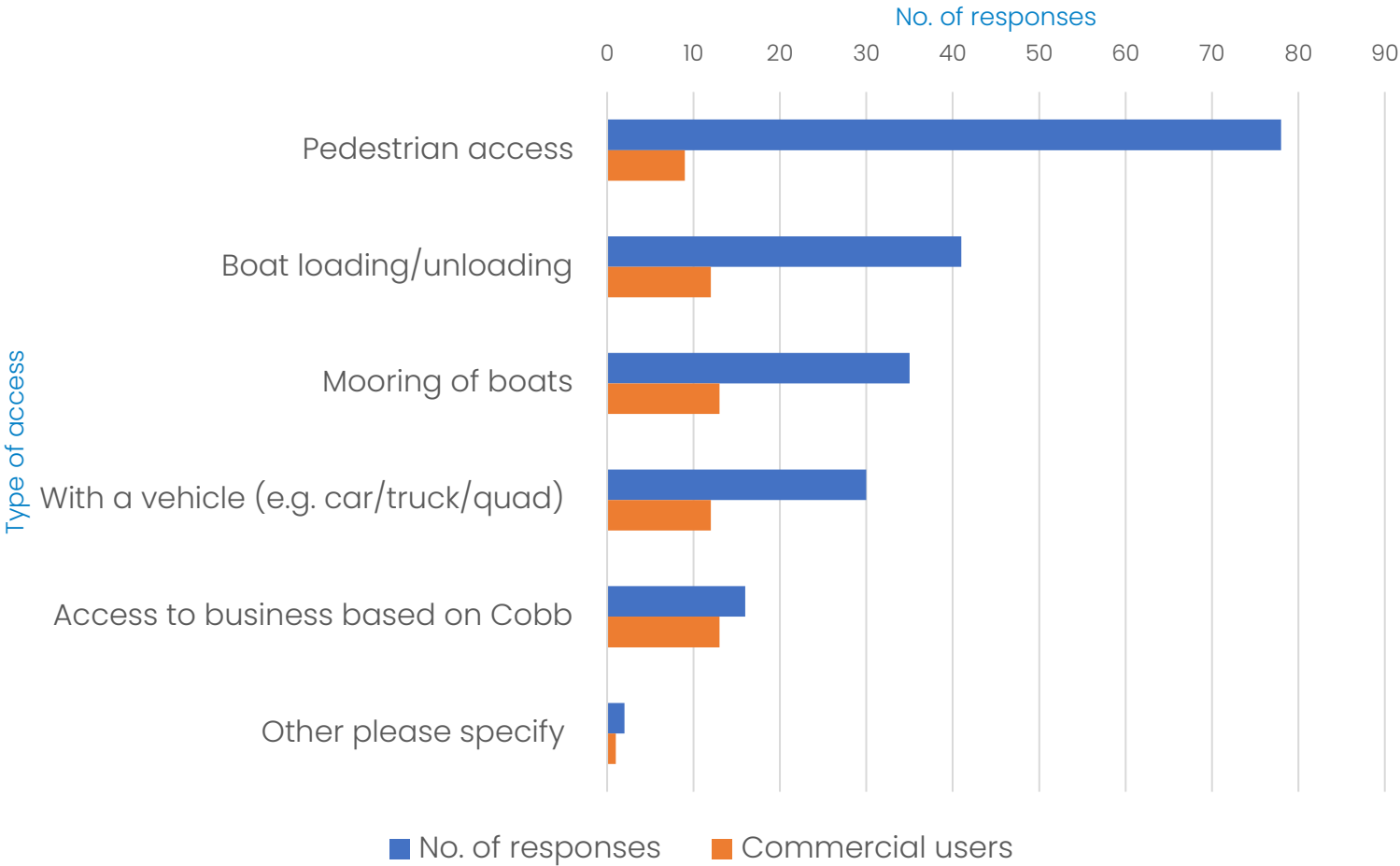


**Question Two:** What type of commercial or recreational activity do you undertake at the Cobb? (Tick all that are relevant)

No. of respondents	Activity
56	Walking/sightseeing
29	Recreational fishing
22	Tourism
21	Private mooring
20	Sailing
13	Fishing or dive charter boat user
10	Commercial fishing
9	RNLI - Shop
9	Aquarium
7	Other (inc. powerboat courses, running, power boating, kayak launching, water polo championship)
5	Rowing
4	Land based business - tourism/hospitality
3	Water based activities run as a business
3	RNLI - Lifeboat
3	Education
1	Community representative for community groups related to the Cobb
1	Marine safety/regulation or management

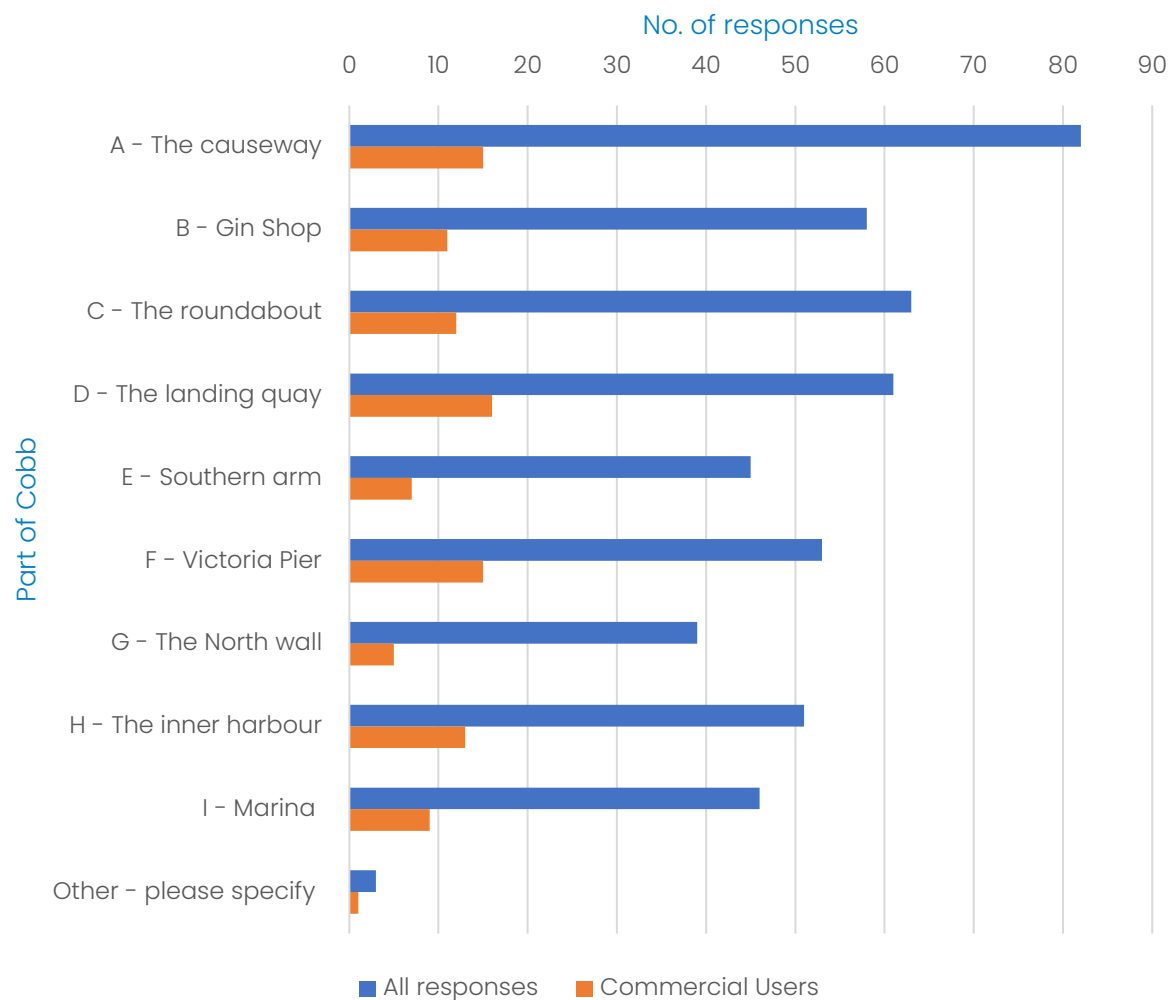
**Question Three** What is the name of the organisation you own or work for that uses the Cobb harbour? (If not an organisation, please put N/A or leave blank)

**Question Four:** What type of access do you require to the Cobb?



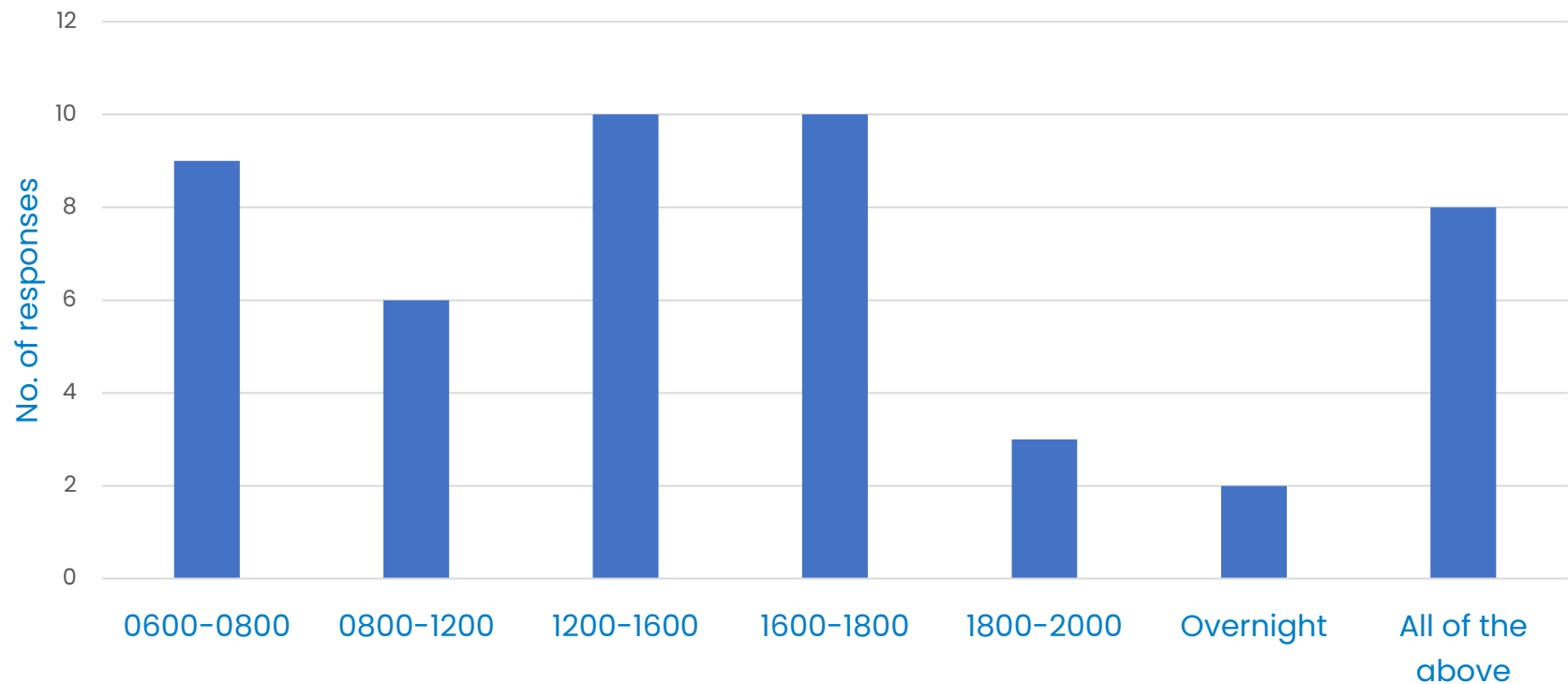
Other please specify:  
Store/shed access

## Question Five: What part of the Cobb do you require access to?

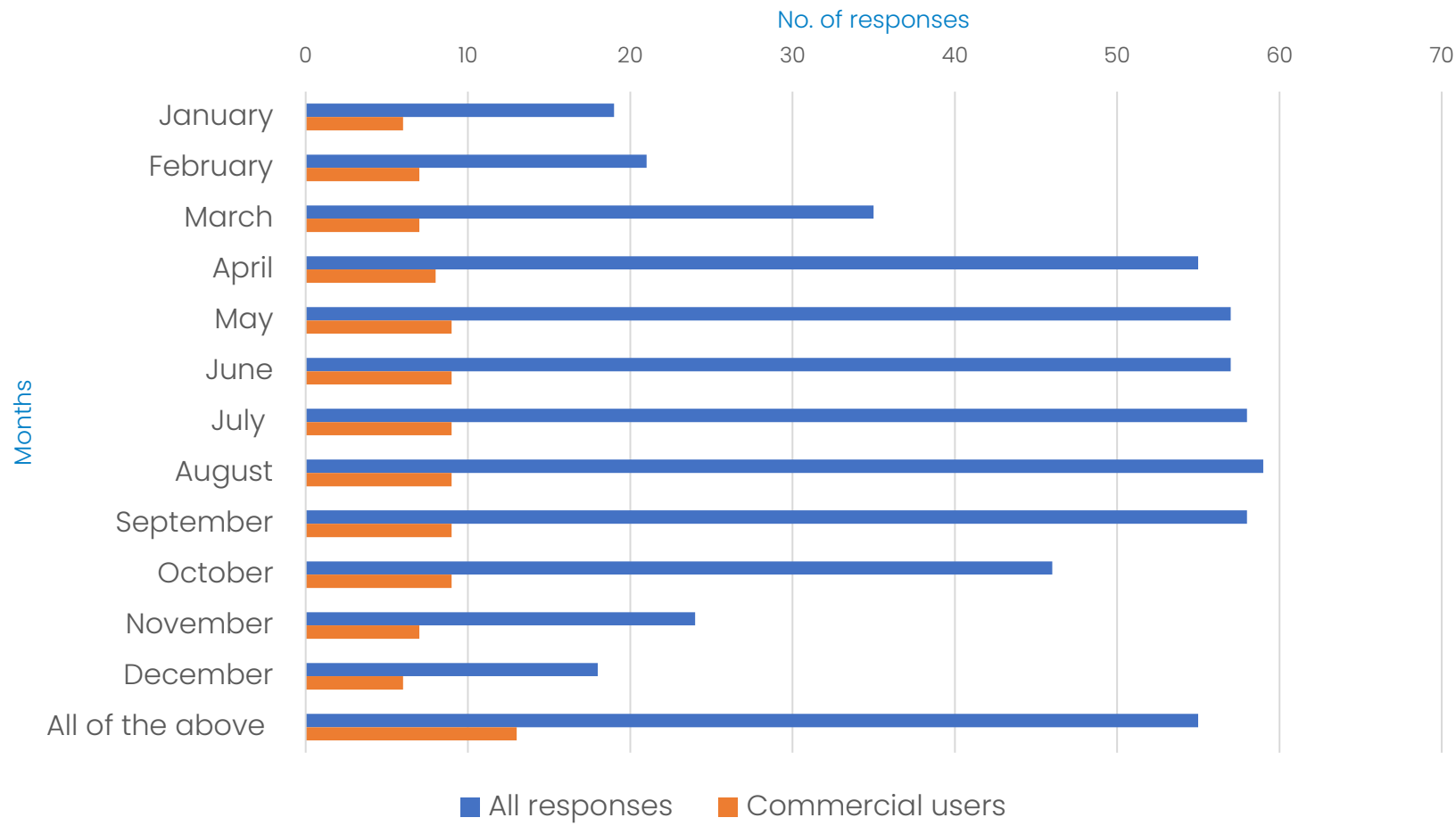


Other:  
Slipway x 2 beach x 1

**Question Six:** If you access the landing quay for commercial purposes, what times are you most likely to access that area?



**Question Seven:** What months do you generally require access to the Cobb?





**Question Eight:** Do you have access to an alternative harbour/mooring away from the inner harbour of the Cobb you could use temporarily?

	All responses	Commercial users
Yes	3	1
No	59	14

## Question Nine

Any other comments about the Cobb stabilisation project you feel are relevant?

“ We are concerned at the length of time it is taking to secure this project. If in the next couple of years we have gales like we had in 2014 it could cause severe damage to the harbour walls. ”

“ Please respect our need to work the suggestion we use a different harbour is out of the question, this would cause serious financial loss ”

“ It is a vital project to maintain the Cobb as a working space for locals, to protect the town and a very important tourist attraction. ”

“ It is Phase 5 of our Coastal Protection works. We're waiting for this to be completed and increasingly anxious about delays. One more bad storm this winter, like the 2014 storms, could breach to Cobb. Now there's talk of delay beyond 2024. Lyme depends on the Cobb, it's not just 200 houses/ properties! ”

“ I hope that this work will be planned outside the busy tourist season. ”

“ Good to receive the information and to see progress is being made. ”

## Next steps

- The project is in detailed design phase
- During this phase there will be further consultation with commercial and recreational users and the wider public in due course – details will be shared with stakeholders and hosted on the dedicated webpage for the project.
- We are particularly keen to understand how commercial users access the Cobb and how we can minimise any potential disruption when the essential works take place.
- To join the stakeholder mailing list please email [dorset.coast@dorsetcouncil.gov.uk](mailto:dorset.coast@dorsetcouncil.gov.uk)
- To view the dedicated website please visit: [www.dorsetcoasthaveyoursay.co.uk/lyme-regis-cobb-stabilisation-scheme](http://www.dorsetcoasthaveyoursay.co.uk/lyme-regis-cobb-stabilisation-scheme)