



Transforming Cities Fund

Selby Station Gateway

Delivered in
partnership by:



Funded by:



Zone 2: Cowie Drive & proposed new station access

Cowie Drive currently provides access to several commercial business units from Ousegate. Although it runs alongside the existing railway line and borders the main station building it does not provide formal and public access to the station itself. In order to create more space for walking, cycling and other changes outside the main station entrance we need to relocate some of the existing parking.

We also feel creating a new entrance into the station from Ousegate and Cowie Drive would help encourage more use of the station. This element of the proposal aligns with but is not dependent on the delivery of a new walking and cycling bridge over the river Ouse. This is discussed in more detail as part of Zone 6.

We want to invest in this space by making a number of key changes

- Upgrade Cowie Drive making it publicly accessible and safe by
 - Resurfacing the road/footways
 - Creating a new pedestrian crossing
 - Widening the footways and removing problematic vegetation
 - Planting trees
- Create a new car park including disabled bays and electric charging points (partly replacing spaces currently located on station road (see zone 1))
- Create a new entrance to the station with ramped access Although we would like to provide cycle tracks or lanes along Cowie Drive there is not enough space. Low traffic speeds and relatively low traffic flows will hopefully help keep cyclists safe.

Zone 2 Plan A: Shows the existing layout and some of the challenges and issues we are aware of.

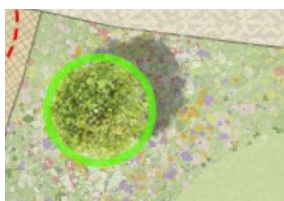
Zone 2 Plan B: Shows the proposed layout with suggested changes.

If interested in this zone make sure to check out our plans for the Selby railway station building itself (Zone 1) and the plans for Ousegate (Zone 3).

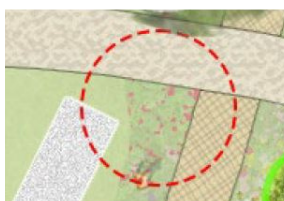
Zone 2: Key



Existing trees that will remain



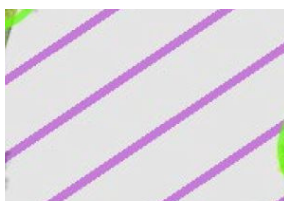
New trees we want to plant



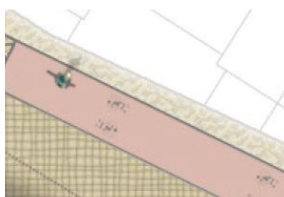
Trees which may need to be removed



Blue badge parking bays

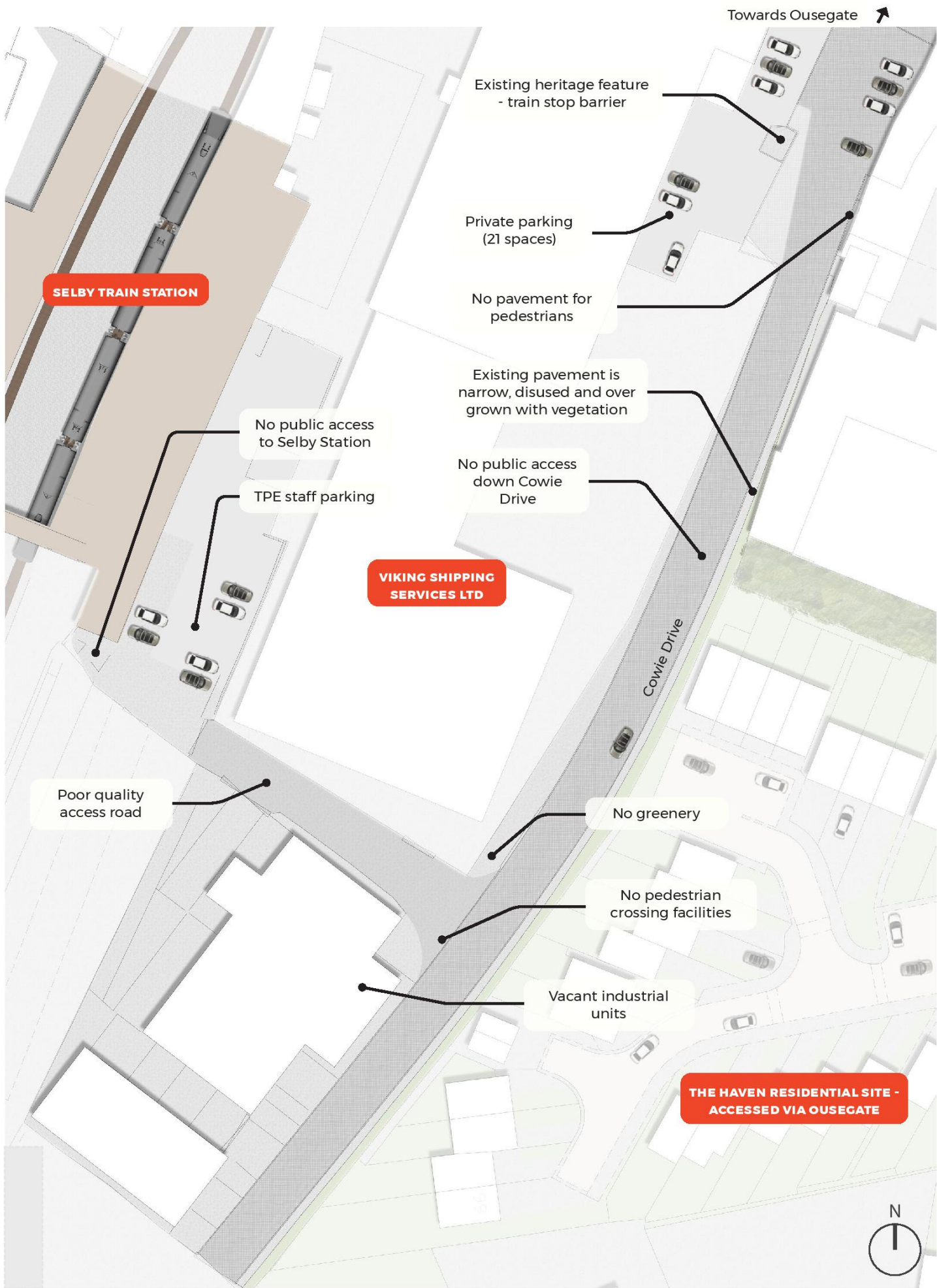


Development opportunity

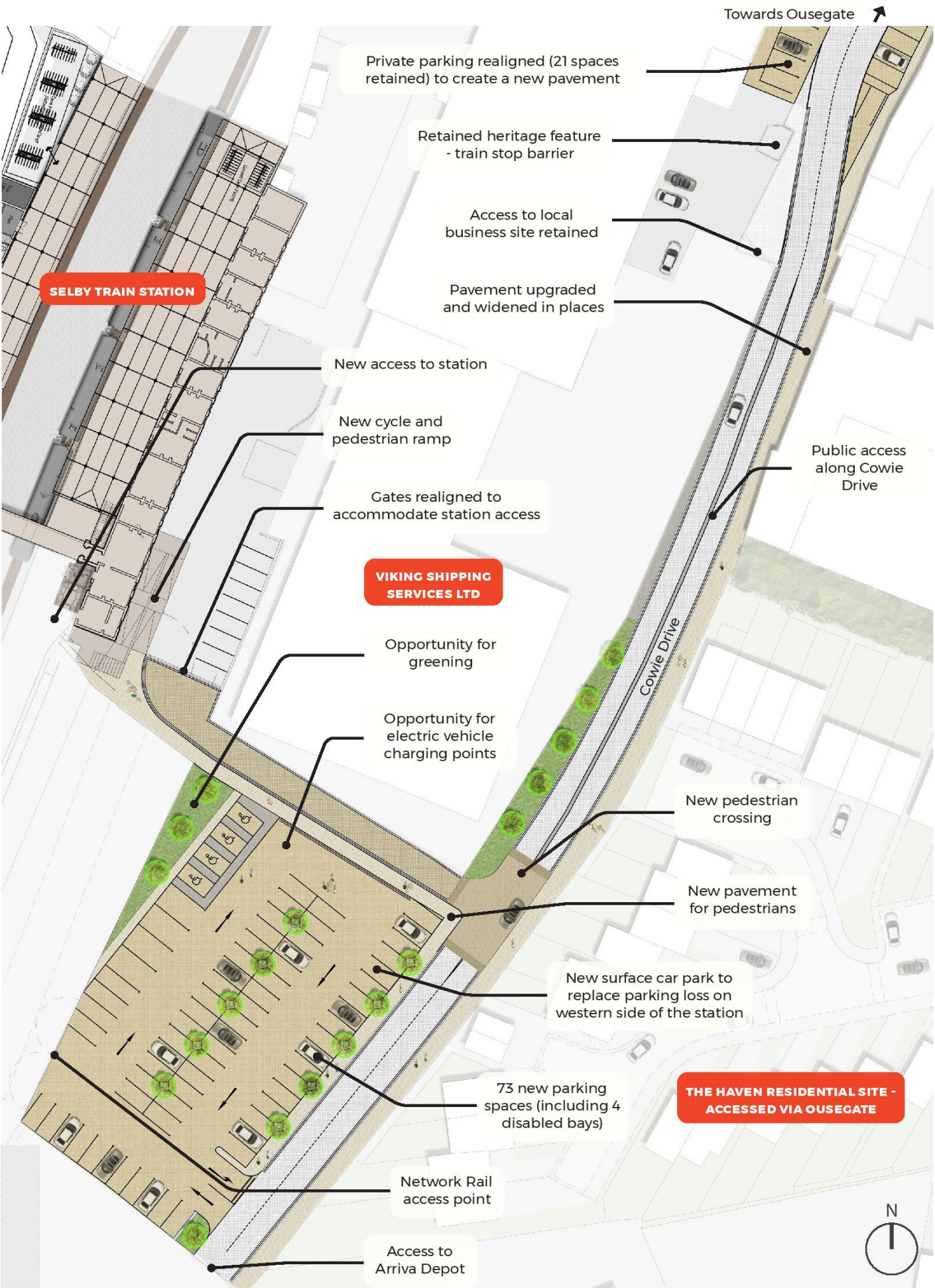


Cycle lanes

Zone 2: Plan A: Cowie Drive and proposed new station entrance (existing)



Zone 2: Plan B: Cowie Drive and proposed new station entrance (proposed)



Zone 2: Frequently Asked Questions

How will these changes impact the businesses on Cowie Drive?

Businesses are expected to operate as usual. Access to sites will be maintained and visibility splays at the Ousegate junction improved through the removal of walls. A new pedestrian footpath will be constructed between the existing path and the Ousegate junction to cater for increased footfall. No private parking is lost.

Why create a second entrance into the station?

We want to encourage as many people to travel to and from Selby by rail as possible. We also want those passengers to travel to and from the station on foot or by bike. Creating a second entrance point via Cowie Drive will help reduce some passengers journey times and make traveling by rail more convenient. We also want to make traveling by rail as easy as possible for disabled users and creating this new entrance and the associated new blue badge parking opportunities will help to do this. Relocating some of the station parking from Station Road to Cowie Drive helps create more space for cyclists and pedestrians in this space.

What about security, anti-social behaviour and safety?

The proposals will change the look, feel and purpose of Cowie Drive. We hope this will become a popular route to and from the station particularly for pedestrians and cyclists. We want to understand how residents and other stakeholders feel about these changes. We hope we address any concerns people have through the scheme design as it develops further.

Will the new station entrance be Disability Discrimination Act (DDA) compliant?

Yes, a new DDA compliant ramp will be provided from the pavement to platforms 2 and 3.