



# Safer Streets for Enfield 20mph speed limits Survey summary report

October 2025



# Background

Enfield Council published a proposal in July 2025 to increase the number of 20mph speed limits on residential streets and roads in town centres. This is part of our plan to make the borough safer, cleaner and greener for everyone.

This proposal is part of our long-term commitment to:

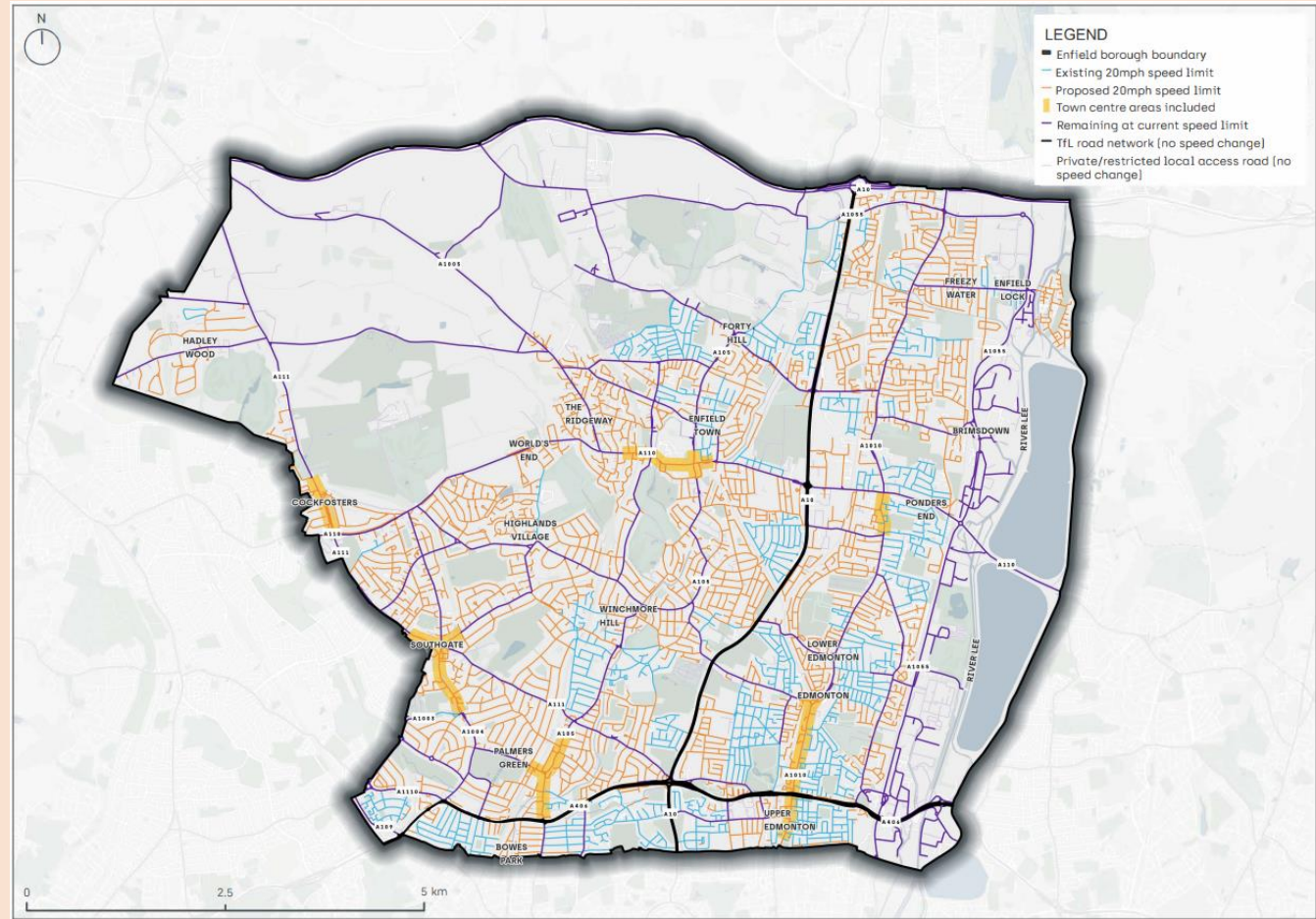
- Achieve the Mayor of London's Vision Zero target of no deaths or serious injuries on our roads
- Tackle the climate emergency
- Enable people to walk, cycle and use public transport more easily and safely
- Create neighbourhoods where people feel confident spending time outdoors

20mph speed limits already exist on around 25% of our roads. This proposal is about expanding this, so more areas can benefit from safer and calmer roads.

# Proposal

From July to September 2025 Enfield Council engaged with the community on the proposed introduction of 20mph speed limits on residential roads and town centres throughout the borough. A large digital version of the map can be found [here](#).

- The blue roads on the map are already 20mph.
- Purple (and black) roads were proposed to remain at their existing speed limit.
- Orange roads were proposed for consideration to be reduced from 30mph to 20mph.



# Hearing from the community

Flyers were sent to every property in the borough inviting participants to complete a survey, email or write to us with their views on the proposal.

The survey was hosted on the Let's Talk Enfield project page at:

<https://letstalk.enfield.gov.uk/20mph>

The survey asked respondents how often they travel using different modes of transport, and how supportive they are of 20mph speed limits on every road in the borough, on their street and on roads within their local town centre.

The survey was open for responses from 16 July to 21 September 2025. A total of 1749 responses were received; 1374 from the online or paper survey and 375 from emails and letters.

The following slides detail the analysis of responses received through the survey which asked about the level of support for 20mph speed limits on your street, in town centres and on every road within the borough. A more detailed report that includes responses received via letter and email will be published later this year.

## Safer Streets in Enfield: 20mph Speed Limits



### Making our neighbourhoods safer, cleaner and greener

Enfield Council is proposing to introduce **20mph speed limits on residential streets and roads in town centres** — part of our wider plan to make the borough safer, cleaner and greener for everyone.

### Why 20mph? Because small changes in speed make a big difference.

This proposal is part of our long-term commitment to:

- Achieve the Mayor of London's Vision Zero target of no deaths or serious injuries on our roads

- Tackle the climate emergency
- Enable people to walk, cycle and use public transport more easily and safely
- Create neighbourhoods where people feel confident spending time outdoors

The [Journeys and Places programme](#) has already made great progress throughout the borough. We've created Quieter Neighbourhoods to reduce through traffic and calm speeds, expanded the borough's Walking and Cycling network, introduced [School Streets](#) to protect children during school drop-off and pick-up times and invested in improved Public Spaces with greenery, better lighting, and safer crossings.

Now, we're proposing 20mph speed limits on local streets to make these changes even more effective.

Every year, too many people are seriously injured or lose their lives on London's roads. That's why the [Mayor of London's Vision Zero](#) ambition is aiming for a future where no one is killed or seriously injured when travelling in the city. Enfield Council is committed to playing our part in achieving this.

The [Enfield Transport Strategy](#) sets out a vision for safer, more accessible neighbourhoods where people feel safe and able to walk, cycle and use public transport. This sits alongside our [Climate Action Plan](#) which highlights the need for action to reduce emissions and improve air quality across the borough.

We are proposing to introduce a 20mph speed limit on most residential roads and streets in and around town centres. Larger strategic roads, such as the A10 or North Circular (A406), and roads not managed by Enfield Council, are not included in this proposal. Please refer to the [map](#) in the Document Library on the right-hand side of this page for the current proposal.



### STAY INFORMED

Subscribe for project updates

Your email address...

SUBSCRIBE

92 members of your community are following this project

### Key Dates

**Deadline for engagement survey responses**  
21 September 2025

### FAQs

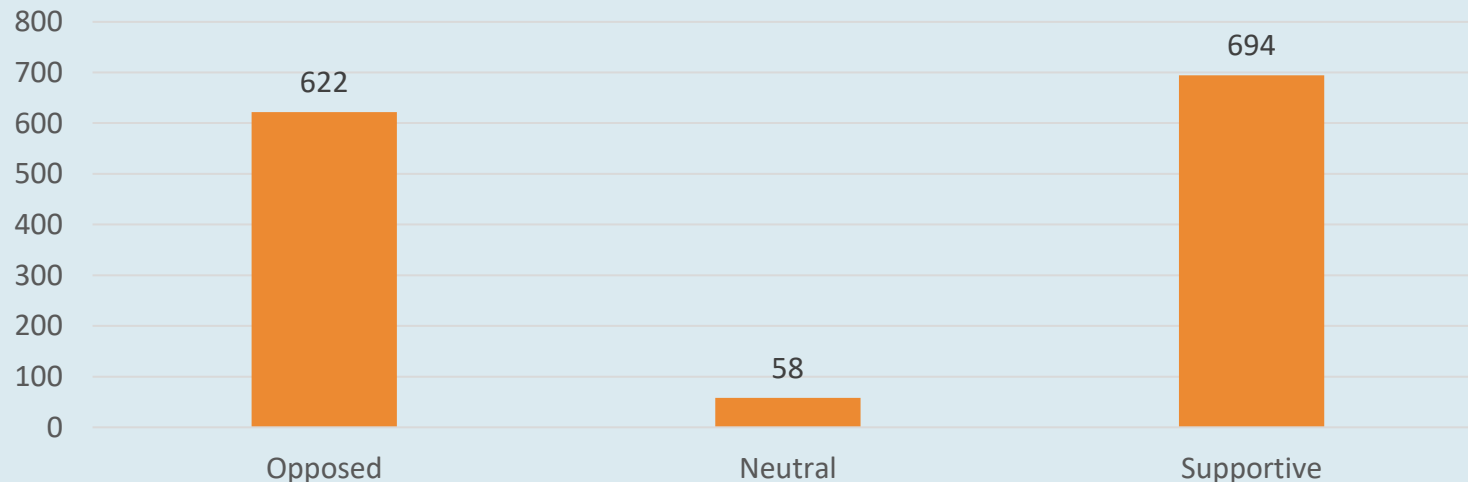
- 1 Will reducing the speed limit increase journey times?
- 2 Why are we including particular roads, and not some others?
- 3 How will the speed limits be enforced?
- 4 How will you monitor the benefits of this?

# On your street

The graph below shows the level of support for introducing 20mph speed limits on respondents' individual streets, as taken from the survey. Half (51%) of all respondents were either highly supportive or somewhat supportive, suggesting that many residents are open to change that would reduce vehicle speeds and create calmer streets. A smaller proportion (4%) felt neutral, while 45% were either not very supportive or not at all supportive. These results indicate mixed views overall, but it is clear that a significant number of residents support lower speed limits on their street.

The Council will now take time to review individual comments and street trends in more detail, alongside other relevant considerations such as road safety data and local context. This will help inform whether there are specific residential areas where a 20mph speed limit could be appropriate in future. No changes on residential streets are proposed at this time, and any future proposals for 20mph speed limits would be subject to formal statutory consultation.

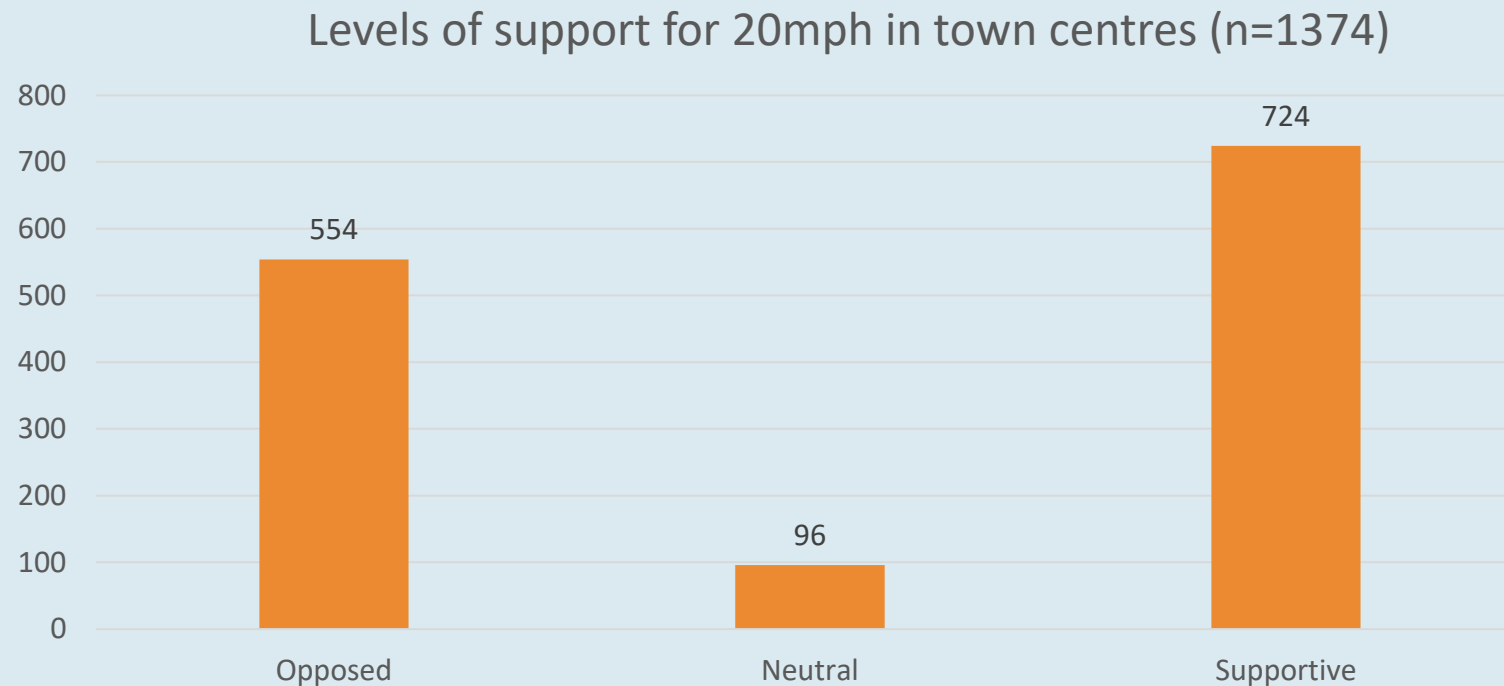
Level of support for 20mph on respondents' streets  
(n=1374)



# In town centres

The graph below shows residents' views on the introduction of 20mph speed limits in town centres, as taken from the survey. More than half (53%) of respondents were either highly supportive or somewhat supportive, 7% felt neutral, and 40% were either not very supportive or not at all supportive. Whilst views were mixed, the results show that many residents see value in introducing slower speeds in areas where people walk, shop and socialise. Based on this feedback and other local considerations, the Council is progressing proposals in the primary town centres of Palmers Green, Southgate and Edmonton.

A statutory consultation has now been launched for the proposals in Palmers Green, Southgate and Edmonton, and we encourage residents and local businesses to take part and share their views.



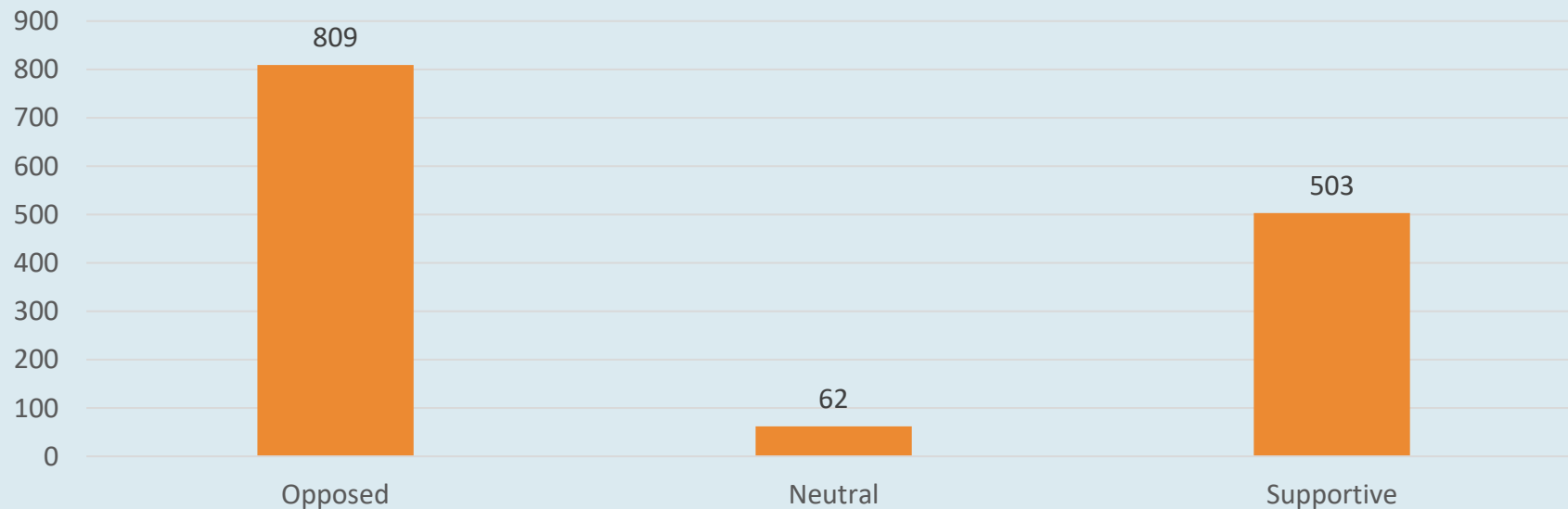
# Every road within the borough

The graph below shows residents' views on introducing 20mph speed limits on all roads throughout the borough, as taken from the survey. Just over a third (37%) of respondents were either highly supportive or somewhat supportive, 5% felt neutral, and 59% were either not very supportive or not at all supportive.

The Council had not proposed a borough-wide 20mph speed limit but was interested in understanding residents' views on the idea. The feedback received clearly shows that there is limited support for a blanket approach. This aligns with the Council's position that a more targeted application of lower speed limits, focusing on residential areas and town centres, is the most appropriate way forward.

As such, the Council will not be pursuing a borough-wide 20mph speed limit.

Level of support for 20mph on all roads within Enfield (n=1374)



# Overall themes

The below are some key themes, issues and questions that we've heard from the community and the Council's response to them:

## **Residents do not want to see 20mph on all roads within Enfield**

The proposal presented 20mph speed limits on most residential streets and roads within Enfield's town centres, but not on major roads such as the A1010 or A106, therefore not a borough-wide approach. We recognise that Enfield's roads play an important role in moving people and goods throughout the borough and we want to minimise unnecessary disruption. At the same time, we must respond to the number of people killed or seriously injured on our roads, the climate emergency, and wider public health concerns. Our proposal of 20mph speed limits on residential roads and town centres seeks to strike a balance between these needs. The Council is not proposing to introduce 20mph on every road within the borough.

## **How will the new speed limits be enforced?**

The responsibility of enforcing speed limits sits with the Metropolitan Police, and we are working closely with them to understand how they can support this programme. At this stage, physical measures such as speed bumps or chicanes are not being proposed. However, if we implement the project, then we will monitor vehicle speeds afterwards and consider introducing further measures if evidence shows they are needed.

# Overall themes

## **Concerns about adverse impacts to traffic congestion, journey times, air quality and other health impacts**

There are concerns that lower speed limits could lead to longer journey times, more congestion, or a worsening of air quality. In urban areas, journey times are largely dictated by junction delays and stopping at traffic lights, rather than the speed travelled between them. Evidence from other parts of London shows that introducing 20mph limits does not significantly affect overall traffic flow. Driving smoothly at lower speeds can also help to reduce emissions and the particulates from tyres and brakes that are made worse by stop-start acceleration.

## **Suggestions to implement physical speed controlling measures such as speed tables or chicanes**

Some residents have suggested that road safety would be better improved through changes to street layouts, crossings, or other design features. We agree that good design is a vital part of making our roads safer and easier to use. That is why our Journeys and Places programme includes a range of projects alongside the proposed speed limit changes: e.g. new pedestrian crossings, cycle routes, and public realm improvements. The 20mph proposal is intended to complement these wider investments, not replace them. Where we implement 20mph, we will monitor its impacts and consider further design interventions where evidence shows they are needed. By combining lower speeds with well-designed streets, we can create a safer and more attractive environment for all road users.

# Next steps

Following the engagement period held from July to September 2025, the Council will now progress to the next stage of the project in Palmers Green, Southgate and Edmonton town centres. Draft Traffic Orders for these areas will be published as part of a statutory consultation, which will begin on Wednesday 1 October 2025. Residents, businesses and other stakeholders will be invited to provide formal representations or objections as part of that process.

Enfield Town is not included in this phase as 20mph proposals for that area are already in development through a separate project. We know that residents in other areas may also wish to see changes, and the outcomes of this first stage of implementation will help inform how we consider similar proposals in other town centre locations in future.

Alongside this, the Council will take more time to carefully review the detailed feedback received on individual residential streets. This feedback will help inform residential locations where further consideration is needed on introducing lower speed limits in future. Any further proposals would be subject to separate statutory consultation.

We also acknowledge the strong level of opposition to a borough-wide 20mph speed limit. In line with the Council's original approach and the feedback received, we will not be pursuing a blanket policy for the entire borough.

We would like to thank everyone who took part in the engagement, whether by completing a survey or sharing their views in writing. Your feedback will continue to help shape the direction of this project. The project page is at: <https://letstalk.enfield.gov.uk/20mph>



Connecting communities  
to create a more vibrant, greener  
and healthier Enfield.

