

## STONEHAVEN PARTICIPATORY BUDGET

# VOTE

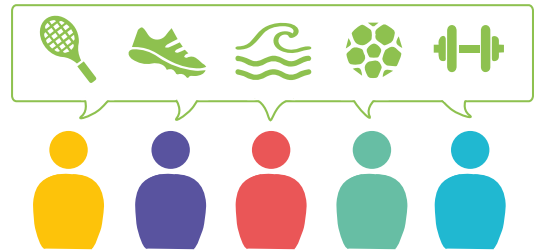
07.02.22 - 21.02.22

#VoiceYourChoice

SCAN  
ME!



How would **YOU** spend £1.8 million on infrastructure for sport & leisure in Stonehaven?



Aberdeenshire Council officers and community representatives have engaged with sports clubs, young people, and senior groups and held focus group sessions to identify needs and generate ideas to create options for a public vote. The online platform received 22,000 visits and allowed ideas to be input.

The options presented were agreed as a result of looking at the evidence gathered through idea collection, focus groups, best value and how the whole community would be positively impacted.

The engagement was focused on identifying the sport and leisure activity needs.

Cast your vote between  
7th - 21st February 2022

## CONTENTS

### STONEHAVEN PB OPTIONS APPRAISAL

#### NEW OUTDOOR COVERED SPORTS AREA

##### Ideas Include:

- Outside, covered area for multi-sport use
- Provide hall space for a range of groups
- Outside exercise / fitness class space

**Cost: £1.4m**

#### DEVELOP OUTSIDE SPACE AT STONEHAVEN RECREATION GROUNDS

##### Ideas Include:

- Develop the outside space at SRG to include: Quoits, challenging putting, Pentanque, outside exercise equipment / outdoor gym

**Cost: £150K**

  
**SCAN  
ME!**



#### EXTEND AND UPGRADE STONEHAVEN LEISURE CENTRE

##### Ideas Include:

- Extension to give increase in size of fitness / dance studio
- PAMIS changing (Promoting a More Inclusive Society)
- Extension to improve and increase gym
- Pool area - enhance lighting
- Upgrade to changing \*

**Cost: £1.4m**

\* Upgrade to changing facilities including toilets will be funded from another LLA budget.

#### STADIUM UPGRADE TO STONEHAVEN RECREATION GROUNDS

##### Ideas Include:

- Maximise use of stadium at Stonehaven recreation grounds
- Small halls for meeting & community use.
- Increase use of the SRG for wider community

**Contribution: £500K**

Estimated project will cost £800 - £1m. The participatory budget contribution will be a maximum £500K

#### NEW PAMIS & ENTRANCE UPGRADE TO STONEHAVEN LEISURE CENTRE

##### Ideas Include:

- PAMIS changing (Promoting a More Inclusive Society)
- Fully accessible entrance area

**Cost: £350K**

#### IMPROVEMENTS TO EXISTING BMX / SKATE PARK

##### Ideas Include:

- Skate park and BMX improvements which enable full year use. ie lighting / bins / seating

**Cost: £150K**

#### NEW INDOOR TENNIS FACILITY

##### Ideas Include:

- Tennis and multi-use facility at rear of SRG.
- Roof over tennis courts

**Contribution: £250K**

Estimated project will cost £1.25m. The participatory budget contribution will be a maximum £250K

**Cast your vote between  
7th - 21st February 2022**

## NEW OUTDOOR COVERED SPORTS AREA



All images are for illustrative purposes. Solid sides have been removed to enable an internal view

### Ideas Include:

- Outside covered area for multi-sport use
- Provide hall space for a range of groups
- Outside exercise / fitness class space

**Cost: £1.4m**

### Outline Specification:

- 2 Court - 30m x 40m
- Porous macadam surface 60mm
- MugaCova Modular steel frame powder coated for outdoor use. Reverse stanchion design
- Polyester PU coated tensile membrane roof cover – open sided to approx. 4m high
- Perimeter panel sides to 4m high, with doors/gates
- Lighting system, with emergency lighting
- Poraflex sports surface
- Sports equipment – Fixed basketball goals with supporting steelwork, tennis nets and posts



Possible location for an outdoor covered sports area – linked to the Leisure Centre

Existing Stonehaven Leisure Centre

40m x 30m  
Proximity to boundary to be checked if this option is to be taken forward

**Cast your vote between  
7th - 21st February 2022**



**Stonehaven**  
Participatory Budget for  
Sport & Leisure

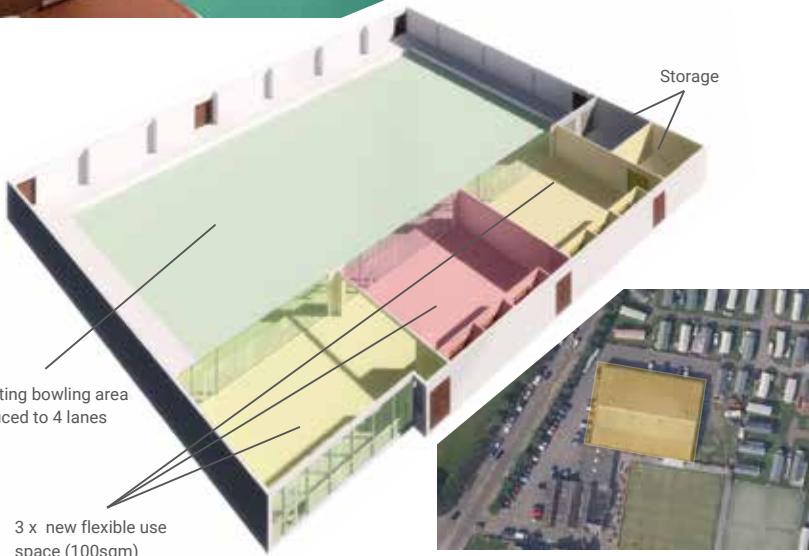


## STADIUM UPGRADE TO STONEHAVEN RECREATION GROUNDS (SRG)



### Outline Specification:

- Creation of 3 new flexible use rooms by removal of 2 bowling lanes



All images are for illustrative purposes.

### Ideas Include:

- Maximise use of stadium at Stonehaven Recreation Grounds (SRG)
- Small halls for meeting & community use
- Increase use of the SRG for wider community

**Contribution: £500K**

**Cost: £1m**

Estimated project will cost £800K - £1m. The participatory budget contribution will be a maximum £500K

## DEVELOP OUTSIDE SPACE AT STONEHAVEN RECREATION GROUNDS (SRG)

### Ideas Include:

- Develop the outside space at SRG to include:  
Quoits, challenging putting, Pentanque, outside exercise equipment / outdoor gym

**Cost: £150K**



**Cast your vote between  
7th - 21st February 2022**

## EXTENSION & IMPROVEMENTS TO STONEHAVEN LEISURE CENTRE



SCAN ME!

### Ideas Include:

- Extension to give increase in size of fitness / dance studio
- PAMIS changing (Promoting a More Inclusive Society)
- Extension to improve and increase gym
- Pool area - enhance lighting
- Upgrade to changing \*

**Cost: £1.4m**

\* Upgrade to changing facilities including toilets will be funded from another LLA budget.



Cast your vote between  
7th - 21st February 2022

## NEW INDOOR TENNIS FACILITY



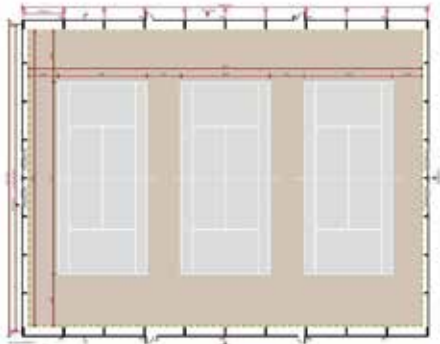
### Ideas Include:

- Tennis and multi-use facility at rear of SRG.
- Roof over tennis courts

**Contribution: £250K**

**Cost: £1.2m**

Estimated project will cost £1.25m. The participatory budget contribution will be a maximum £250K



### Outline Specification:

- 3 court covered area
- Tensile fabric roof with glulam structure
- Floodlit lighting
- 9m high structure

SCAN ME!



All images are for illustrative purposes.

## IMPROVE EXISTING SKATE / BMX PARK

### Ideas Include:

- Existing Skate and BMX park improvements which enable full year use. ie lighting / bins / seating

**Cost: £150K**

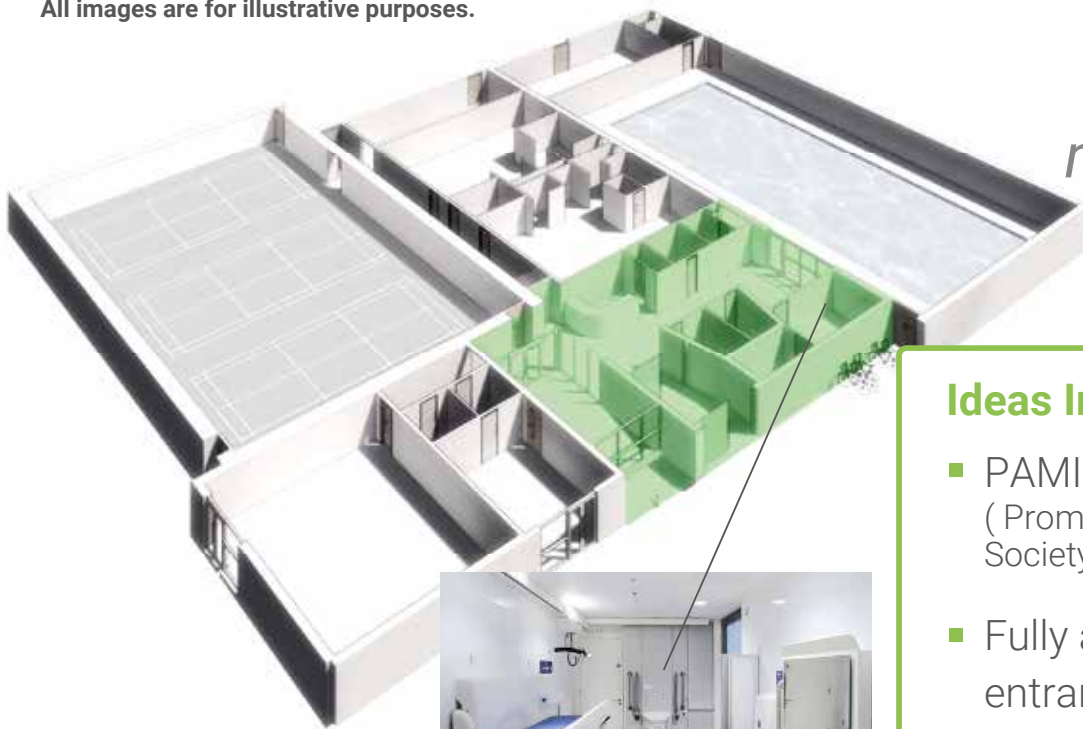


Cast your vote between  
7th - 21st February 2022



## NEW PAMIS CHANGING & ENTRANCE UPGRADE TO STONEHAVEN LEISURE CENTRE

All images are for illustrative purposes.



New 'Pamis' accessible changing facility & improved entrance



*'PAMIS - Promoting a more inclusive society'*

### Ideas Include:

- PAMIS changing ( Promoting a More Inclusive Society )
- Fully accessible entrance area

**Cost: £350K**

Following the conclusion of Voting Fortnight, options shall be ranked in order of which receive the most votes. The option with the most votes will receive PB funding; the option with the next most votes will thereafter receive PB funding (unless there are insufficient funds within the PB to cover the cost of that option); this process will continue until either the PB has been spent or there is an insufficient PB to cover the cost of any remaining options.

Please note that the cost of each option may not comprise the total cost for delivering that option, which may also be reliant upon other external funding; each option may also require to meet other legislative requirements - for example planning permission, premises licenses or compliance with other legislative regimes. Where any option cannot be delivered for any reason, any unused PB shall be reallocated to a previously unsuccessful option (in accordance with how those remaining options were previously ranked and whether there is sufficient PB to cover the cost of those options) where possible.

**Cast your vote between  
7th - 21st February 2022**