

Safer Streets for Enfield: 20mph speed limits



Making our neighbourhoods safer, cleaner and greener

Enfield Council is proposing 20mph speed limits on residential streets and roads in town centres — not on major roads like the A10 or North Circular.

Why 20mph? Because small changes in speed make a big difference.
Slower streets are:

Safer: More time to react, fewer serious injuries

Cleaner: Lower emissions from less accelerating and braking

Greener: Supports climate action

Healthier: Encourages walking, wheeling and cycling

Quieter streets, stronger communities: People feel more confident outdoors and children are able to walk and cycle to school



Share
your
views



Find out more
letstalk.enfield.gov.uk/20mph



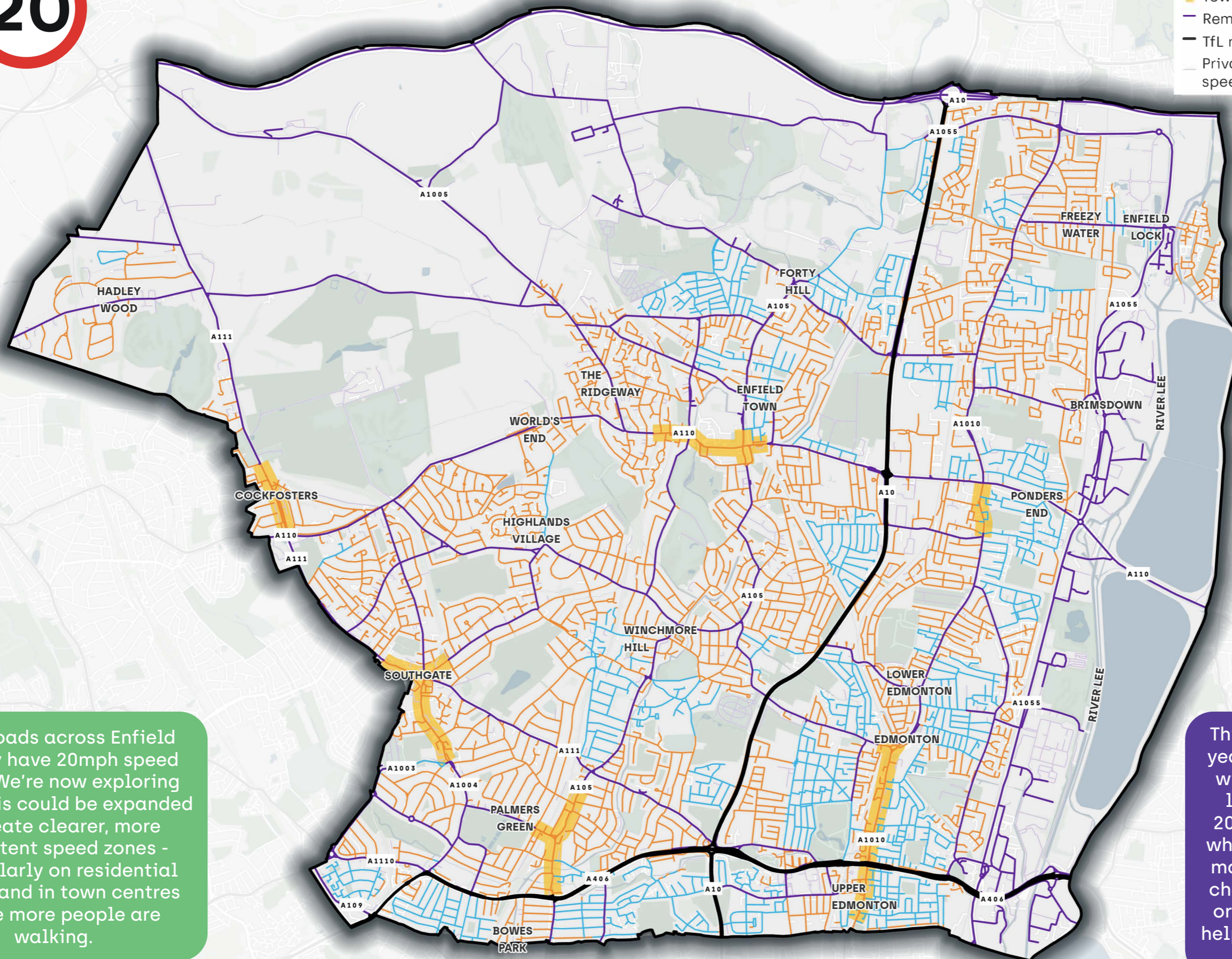


Proposal for 20mph speed limits in Enfield



LEGEND

- Enfield borough boundary
- Existing 20mph speed limit
- Proposed 20mph speed limit
- Town centre areas included
- Remaining at current speed limit
- TfL road network [no speed change]
- Private/restricted local access road [no speed change]



Many roads across Enfield already have 20mph speed limits. We're now exploring where this could be expanded to create clearer, more consistent speed zones - particularly on residential streets and in town centres where more people are walking.

This project will take several years to deliver. The first step will involve updating speed limits and putting up new 20mph signs. On some roads where speeds remain high, we may need to consider further changes, such as road humps or other design measures, to help keep vehicles moving at a safe speed.

The evidence is clear: 20mph makes a difference

Enfield has one of London's highest road death rates, with speed contributing to 61% of recorded collisions over the past five years. 20mph speed limits have significant benefits:



Fewer deaths and serious injuries: a person is 5x more likely to be killed if hit by a vehicle travelling at 30mph than at 20mph



42% fewer collisions: a car travelling at 30mph takes roughly twice as far to stop as one at 20mph



Safer streets: More people feel safe walking, wheeling and cycling



Better quality of life: Reduced noise and pollution from lower levels of accelerating and braking



Economic boost: Local businesses benefit from increased footfall and safer shopping environments

Source: TfL 2025

What about enforcement?

Should the decision be made to implement 20mph speed limits on roads in Enfield, we will monitor speeds and could look to introduce further measures where speeds remain high. We will continue to work in partnership with the Metropolitan Police who are responsible for enforcing speed limits.

We've already taken big steps to make Enfield safer and healthier

- ✓ School Streets to protect children at school gates
- ✓ Better walking and cycling networks
- ✓ Quieter neighbourhoods with less through traffic
- ✓ Greener, improved public spaces

Now we're making sure these investments deliver even more benefit — by lowering speeds on local streets.

Share your views

Help us make Enfield safer, cleaner and greener. Share your views on the proposed 20mph speed limits by Sunday 21 September 2025 in one of the following ways:

- Take the survey at <https://letstalk.enfield.gov.uk/20mph>
- Email us at journeysandplaces@enfield.gov.uk
- Write to us at ATTN Journeys and Places, Enfield Council, Silver Street, EN1 3XA

Find out more including FAQs on the project page via the QR code.

Paper copies are available at libraries and Enfield Civic Centre.

